



CITROËN BERLINGO MULTISPACE





CITROËN







FREEDOM WITHOUT COMPROMISE.

LOOK AT THE CITROËN BERLINGO MULTISPACE AND YOU'LL KNOW. THIS IS A CAR FOR ENJOYING LIFE; FOR DOING RATHER THAN THINKING ABOUT IT. THOROUGHLY MODERN AND DYNAMIC, FROM ITS BOLD CHEVRON GRILLE AND FLOWING PROFILE, TO ITS OPTIONAL MODUTOP® CITROËN BERLINGO MULTISPACE IS A MODEL OF FLEXIBLE, AIRY AND SPACIOUS PRACTICALITY.

LOOK INSIDE AND YOU WILL DISCOVER A PLACE WITH CUTTING EDGE ERGONOMICS, INGENUOUS MODULAR STORAGE OPTIONS AND SHEER HIGH QUALITY COMFORT FOR EVERYONE. THIS IS FREEDOM WITHOUT COMPROMISE DEFINED.

➤ **CONTENTS:** 6 FREEDOM WITHOUT COMPROMISE 8 COMPLETE VERSATILITY 10 INTERIOR FLEXIBILITY 12 SEATING 14 ENVIRONMENTAL 15 SAFETY 16 RANGE OVERVIEW 18 OPTIONS 20 COLOUR, TRIM & WHEEL OPTIONS 21 EQUIPMENT SPECIFICATION 22 TECHNICAL SPECIFICATION 24 ACCESSORIES 25 ENVIRONMENTAL COMMITMENT 26 FINANCE, CARE & INSURANCE 27 GLOSSARY AND DIMENSIONS







AT HOME, EVERYWHERE. COMFORTABLE, BRIGHT AND BEAUTIFULLY DESIGNED, THE CITROËN BERLINGO MULTISPACE IS A LIVING SPACE FOR THOSE WHO LIKE TO REALLY LIVE.

WITH A HUGE WINDSCREEN, OPTIONAL MODUTOP® (AVAILABLE ON VTR AND XTR MODELS) AND DEEP SIDE WINDOWS, THIS INTERIOR MAXIMISES LIGHT AND SPACE. IN OTHER WORDS, IT'S A GREAT PLACE TO BE FOR PEOPLE OF ALL AGES: YOUR HOME FROM HOME.

Created for life and where it takes you, the Citroën Berlingo Multispace thinks of everything. There are useful, easy access storage spaces everywhere, so nothing useful gets left out and you can relax – we've done the hard work for you!

› EASY LOADING

The roof bars that come with the MODUTOP® optional on VTR and XTR models are really easy to use and can quickly be changed from transversal to longitudinal. Carry what you want without hassle.

› SPACE INNOVATION

Pure original thinking: the standard split opening tailgate window on XTR models gives you access to the optional MODUTOP®. You can also get at this easily from the second row seats.

› LIGHT FANTASTIC

Height-adjustable headlamps light the way in the Berlingo Multispace, whilst powerful fog lights and daytime-running LEDs standard on VTR and XTR maximise the light outside even further.

› SLIDING DOORS

Two sliding doors make getting into the Citroën Berlingo Multispace a breeze.

› SAFE HOUSE

Thanks to its secure tilt opening rear windows, children can enjoy plenty of fresh air in safety.



GENEROUS DIMENSIONS PACKED WITH TECHNOLOGY AND CLEVER FEATURES. STEP INTO THE CITROËN BERLINGO MULTISPACE AND YOU'LL FIND ALL KINDS OF USEFUL TECHNOLOGY...

NOT FOR ITS OWN SAKE BUT FOR YOURS. EVERY FEATURE IS EASY TO USE AND PART OF THE CITROËN BERLINGO MULTISPACE'S ETHOS – FREEDOM WITHOUT COMPROMISE. A MULTI-FUNCTION ON-BOARD TRIP COMPUTER AND AN MP3 COMPATIBLE CD PLAYER, STANDARD ON ALL MODELS ALONG WITH A SPEED LIMITER FUNCTION, STANDARD ON E-HDi, OPTIONAL ON XTR MODELS AND AS PART OF DETECTION PACK ON VTR, ARE ALL DESIGNED TO MAKE LIFE MORE ENJOYABLE AND SAFER FOR EVERYONE ON BOARD.



Please note: Trim shown is not available in the UK.

> A GENEROUS BOOT

A low threshold means loading the cavernous boot is effortless. Everything is then safely concealed under the rigid parcel shelf.

> ALL HOBBIES WELCOME

If your leisure pursuits involve awkward or bulky gear, relax. By using one of the Citroën Berlingo Multispace's seat folding combinations, you can free up the right space for your free time.

> SET SPEED

An effective safety feature, the speed limiter, standard on e-HDi models, optional on XTR models or part of the optional Detection Pack on VTR models, keeps the Citroën Berlingo Multispace at a set speed. Press the accelerator down to return to normal driving.

> CONNECTING BOX

Combining two outstanding features, standard on XTR models, optional on VTR models, the USB socket allows you to connect an MP3 player to play and browse its content using steering-mounted and dashboard radio controls. At the same time, the Bluetooth® system allows you to make safe hands-free calls, and browse through your phone's Contacts or Call Log.

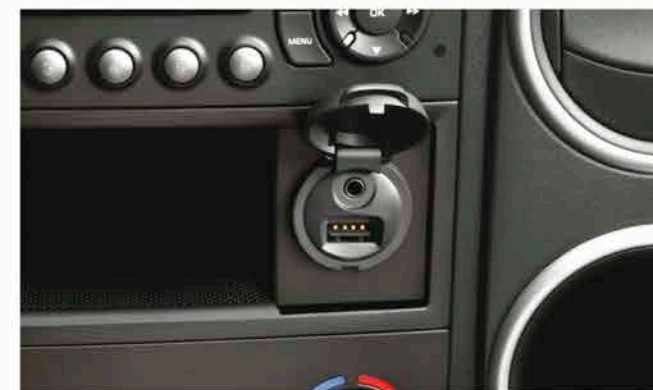
> HAVE A GOOD TRIP

The multi-function on-board trip computer feeds you vital information such as distance travelled and average fuel consumption. Scrolling through the computer menu is really easy, thanks to the control beneath the steering wheel.



> EMYWAY

Optional on XTR models, the eMyWay colour satellite navigation system includes Bluetooth®, MP3 player compatible USB connectivity and live traffic information for maximum convenience. It also features a 7" 16/9 screen, and its SD card integrated European mapping brings you voice guidance and graphics in 2D or aerial perspective.



ONE OF THE FAMILY. INSIDE THE CITROËN BERLINGO MULTISPACE, EVERYONE CAN CLAIM THEIR OWN SPACE.

ALL THOSE EASILY ACCESSIBLE STORAGE PLACES SUCH AS THE POCKETS, THE MODUTOP® AND EVEN UNDERFLOOR STOWAGE SPACES WILL SOON BE HOME TO THE THINGS THAT OTHER CARS SIMPLY LEAVE BEHIND.

> DRIVER'S GLOVE BOX

Who decided that one glove box was enough for everyone? The Citroën Berlingo Multispace gives the driver a roomy one too, located cleverly behind the steering wheel.

> UNDERFLOOR STORES

The Citroën Berlingo Multispace is packed with essential space – even under the floor by the second row seats you'll find two generous compartments.



> OVERHEAD INSPIRATION

The optional MODUTOP® on VTR and XTR models is a perfect example of how the Citroën Berlingo Multispace is special. Clever useful and easy to use, it's also elegantly designed, with flowing lines that complement the whole cabin. It lets in more light but brings more intelligent storage options too.



> STORE AND SEE

On XTR models, there's a handy mirror that lets you keep an eye on back seat 'drivers' while you're stowing things...

> FRESH THINKING

An air freshener is built into the optional MODUTOP® on VTR and XTR models and works with the vents to spread a subtly scented atmosphere.

> PERSONAL AIRSPACE

Air conditioning standard on XTR models and optional on VT and VTR models enables the whole family to stay chilled.





PRACTICAL IS COMFORTABLE IS FLEXIBLE. THERE'S NO 'EITHER OR' WITH THE CITROËN BERLINGO MULTISPACE. THERE'S REAL SPACE FOR REAL PEOPLE AND THEIR BELONGINGS.

COMFORTABLE, HIGH QUALITY SEATS, WITH FRONT ARMRESTS ON XTR MODELS, UNDERFLOOR COMPARTMENTS IN ROW 2, ENDLESS FOLDING COMBINATIONS... IT ALL ADDS UP TO A NO-COMPROMISE CAR THAT HAPPILY ACCOMMODATES FAMILY, FRIENDS OR SERIOUS LOADS. IT'S UP TO YOU.

The choices on offer make everything possible. Modular seating means the back bench can be completely folded, two thirds folded or one third folded, or become three independently folded seats on XTR models. The backs also recline. The Citroën Berlingo Multispace has an interior that shifts as your priorities shift. It's endlessly adaptable. Naturally this comfort zone is also highly practical. From the glove box to an under seat drawer on XTR models, you'll find there's a place for everything.

➤ MAKE ROOM FOR SPACE

The individual, folding back seats on XTR models can be removed one by one to reveal up to 3m³ of useful load space.

➤ MORE THAN JUST SEATS

The three independent foldable, tiltable and removable rear seats on XTR models offer so many configurations. For example, the backrest can be tilted and the centre backrest folds forward to form a table with two cup holders.

➤ MORE SEATS

With the optional Family Pack on the HDi 90 manual VTR model, you get two additional foldable and removable rear seats allowing you to carry an additional two passengers. The Family Pack also brings three separate foldable and removable seats in row 2 allowing easy access to the seats in row 3.

➤ IN-FLIGHT

For long trips or short concentration spans, the front seat backs are equipped with aircraft style tables and cup holders, standard on XTR or optional on VTR models as part of Family Pack.



Please note: Trim shown is not available in the UK.

THE ENGINE ROOM. THE CITROËN BERLINGO MULTISPACE HAS A FITTINGLY WIDE CHOICE OF THOROUGHLY MODERN ENGINES.

THERE IS ONE PETROL OPTION, THE VTi 95 MANUAL WHICH COMPLEMENTS DIESELS OF 75HP, 90HP AND 115HP. ALL DIESEL ENGINES ARE EQUIPPED WITH A DIESEL PARTICULATE FILTER SYSTEM FOR REDUCED ENVIRONMENTAL IMPACT. WHICHEVER YOU CHOOSE, YOU CAN EXPECT BENCHMARK RELIABILITY.



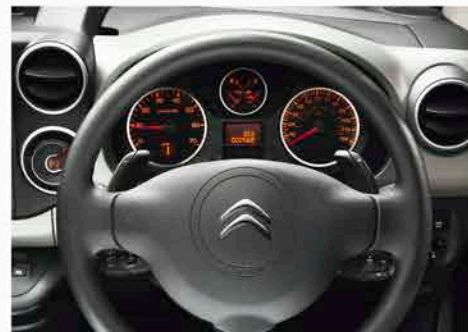
› ROLL WITH IT

No detail has been overlooked with the Citroën Berlingo Multispace. Even the tyres fitted as standard have incredibly low rolling resistance as you drive, the fuel consumption is reduced by up to 4%.

› BIG IDEAS, SMALL FOOTPRINT

15 years of development have gone into our HDi direct injection engines, making them refined and frugal. In combination with a beautifully simple Stop & Start system and sophisticated ETG gearbox, the e-HDi 90 Airdream ETG6 can achieve 61.4mpg and CO₂ emissions of only 120g/km.

The ETG gearbox is an advanced transmission that lets you select either effortless full automatic shifts, or manual changes via the steering wheel mounted paddles. It's part of what makes Citroën efficient engineering unique. Stop & Start puts the engine into idle mode as you decelerate and stops altogether as you come to a halt. The moment you take your foot off the brake, it restarts silently and without vibration. It helps to reduce CO₂ by about 5g/km and fuel consumption by 15% in the city.



SAFETY WITHOUT COMPROMISE.

VERSATILE, COMFORTABLE AND
DISTINCTIVE IT MAY BE, BUT FIRST
AND FOREMOST, THE CITROËN
BERLINGO MULTISPACE IS A MODEL
OF ADVANCED SAFETY.

IT STARTS WITH THE TECHNOLOGY THAT GIVES YOU SECURE HANDLING AND ROADHOLDING. ANTI-LOCK BRAKING SYSTEM (ABS), EMERGENCY BRAKING ASSISTANCE (EBA), ELECTRONIC BRAKEFORCE DISTRIBUTION (EBD) AND UP TO SIX AIRBAGS ARE ALL DESIGNED TO KEEP YOU AND YOUR PRECIOUS CARGO SAFE AT EVERY TURN. IT'S THE KIND OF ENGINEERING THAT INSPIRES CONFIDENCE AND HELPS YOU ENJOY THE RIDE.

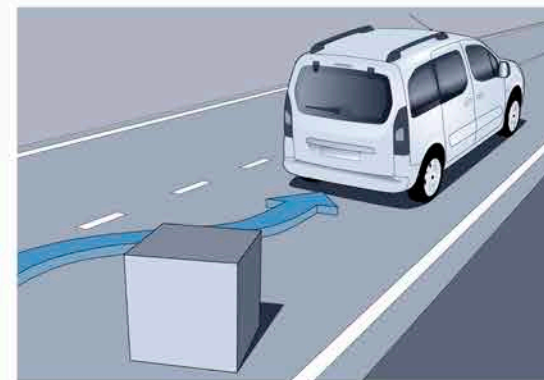
> NO MORE HILL STARTS!

Now you needn't use the handbrake to restart on hills. The Hill Start Assist function, part of the optional Safety Pack on VTR or Safety Plus Pack on XTR (excluding e-HDi) models, maintains drive to the wheels just long enough for the driver to move his or her foot from the brake to the accelerator. It's another innovation that simply makes life easier.



> ELECTRONIC STABILITY CONTROL (ESC)

Electronic Stability Control (ESC) is a computer-assisted traction control system which constantly compares where the vehicle is going with where the driver intends to go, making speed corrections through braking to keep the vehicle 'in line'. A safety pack option is available on selected models which includes ESC with grip control (not compatible with ETG versions).



> ANTI-LOCK BRAKING SYSTEM (ABS)

With car-like roadholding and Anti-lock Braking System (ABS) as standard, the Citroën Berlingo Multispace is designed to keep you out of danger in all conditions.

> UP TO SIX AIRBAGS

Two front lateral airbags are standard on XTR models. The optional Safety Pack, available on VTR models (excluding e-HDi), includes front lateral and curtain airbags whilst the optional Safety Plus Pack, available on XTR models (excluding e-HDi), contains curtain airbags. With two more for driver and front passenger standard on all models, Citroën Berlingo Multispace's occupants are thoroughly protected from every angle.



THERE ARE THREE MODELS TO
CHOOSE BETWEEN. FROM VT
TO VTR TO XTR YOU WILL FIND
SUPERB LEVELS OF EQUIPMENT
AND DESIGN DETAIL.

IN KEEPING WITH THE SPIRIT OF A SPACIOUS, FLEXIBLE CAR,
NOTHING USEFUL OR ENJOYABLE HAS BEEN LEFT OUT.



VT

RAISING THE STANDARD

WITH SUCH A GENEROUS SPECIFICATION, YOU COULD SAY THAT THERE'S NO SUCH THING AS 'STANDARD' WITH THE CITROËN BERLINGO MULTISPACE.

› CITROËN BERLINGO MULTISPACE VT SPECIFICATION INCLUDES:

- ABS with Electronic Brakeforce Distribution (EBD)
- Emergency Braking Assistance (EBA)
- Variable power assisted steering
- Driver's and passenger's airbag
- RDS stereo radio/MP3 compatible CD player with steering mounted controls
- Twin sliding side doors with tilt opening windows
- Height and reach adjustable steering wheel
- Tailgate
- Row 2 split/folding 1/3-2/3, tiltable and removable bench seat
- 15" 'Airflow' wheel covers (set of four)
- PVC floor covering in boot
- Multi-function on-board trip computer
- Retractable and removable luggage cover
- **Super Plus Pack** – high frequency multi-function plip remote control central locking with deadlocks, electric child locks, front electric windows with 'one-touch' operation and electrically adjustable door mirrors

VTR

ADDING VALUE

CHOOSE VTR AND THE SPECIFICATION GROWS... STYLE, SECURITY AND COMFORT ARE ALL ENHANCED.

› CITROËN BERLINGO MULTISPACE VTR SPECIFICATION IN ADDITION TO VT INCLUDES:

- **Look Pack** – daytime-running LEDs, front fog lights with chrome effect surround, chrome 'u-shape' front bumper insert, body colour side rubbing strips, front and rear bumpers, door handles and door mirrors
- Height adjustable driver's seat
- Carpet floor covering in boot
- Overhead storage shelf
- Auxiliary socket in glove box

XTR

PURE STYLE PLUS

XTR IS THE MOST COMPREHENSIVE CITROËN BERLINGO MULTISPACE SPECIFICATION. INCLUDING A LONG LIST OF PRACTICAL, SAFETY AND STYLISH EQUIPMENT, THIS IS THE ULTIMATE EXPRESSION OF A CAR THAT BRINGS YOU MORE OF WHAT MATTERS.

› CITROËN BERLINGO MULTISPACE XTR SPECIFICATION IN ADDITION TO VTR INCLUDES:

- **XTR Look Pack** – daytime-running LEDs, black side rubbing strips, front fog lights with chrome effect surround, chrome 'u-shape' front bumper insert and silver effect lower bumper insert
- **All Road Pack** – underbody engine protection and raised suspension (excludes e-HDi model)
- **Serenity Pack** – electrically heated & folding door mirrors and rear parking sensors.
- **Child Pack** – child surveillance mirror, side window blinds in row 2 and central storage console
- **Connecting box** – Bluetooth® system with USB socket
- Front armrest and storage drawer under driver's seat
- Front lateral airbags
- Air conditioning
- Aircraft style tables on rear of front seats with cup holders
- Row 2 three individual split/folding, tiltable and removable seats
- 12 volt socket
- 16" 'Tikehau' alloy wheels (set of four) – excludes e-HDi model
- Longitudinal roof bars
- Split opening tailgate with dark tinted rear side and tailgate windows

	CO ₂ EMISSIONS (G/KM)		
	VT	VTR	XTR
PETROL ENGINE AVAILABILITY			
VTi 95 manual	155		
DIESEL ENGINE AVAILABILITY			
HDi 75 manual		135	
HDi 90 manual		135	135
e-HDi 90 Airdream ETG6		120	120
HDi 115 manual			134

All diesel engines are fitted with a Diesel Particulate Filter System.



CREATE YOUR CAR. STORAGE OPTIONS THAT MEET YOUR NEEDS TO THE MILLIMETRE. MORE SAFETY AND SECURITY. ADDED COMFORT...

THE CITROËN BERLINGO MULTISPACE OFFERS A WEALTH OF CHOICES.
YOU CAN DECIDE WHAT GOES INTO YOURS.

> MODUTOP®

The optional MODUTOP® on VTR and XTR models not only adds longitudinal or transversal exterior roof bars, a scented air freshener and a 12 volt socket but incorporates numerous, intelligent storage options and allows in more natural light thanks to the glass roof sections.



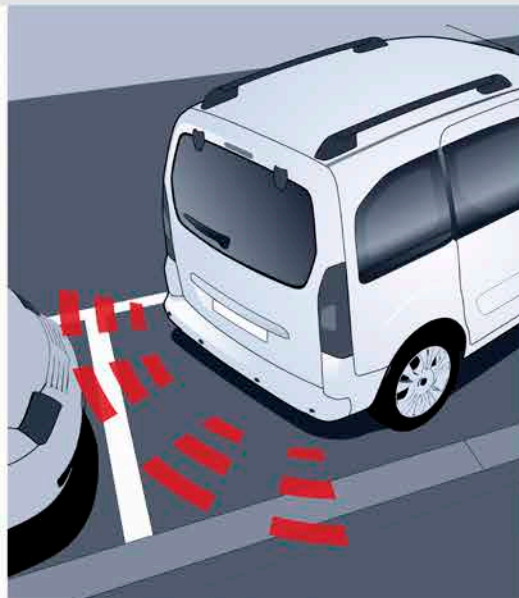
> SPLIT OPENING TAILGATE

A genuine innovation on the Citroën Berlingo Multispace, the split opening tailgate, standard on XTR models, allows access to its cabin roofbox. It also offers access to the boot above and below the parcel shelf and allows for easy access even when space is at a premium.



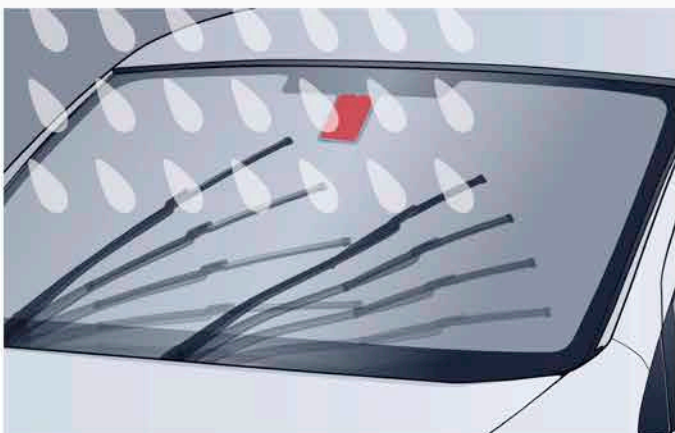
> REAR PARKING SENSORS

Parking your Citroën Berlingo Multispace shouldn't add to the burden of a busy day. Rear parking sensors, standard on XTR models or as part of the Detection Pack or Serenity Pack on VTR models, let you manoeuvre safely and quickly into the tightest spots, fully aware of hidden obstacles.



> AUTOMATIC PACK

Safe progress is enhanced by the automatic rain-sensitive windscreen wipers and automatic headlamps included in the optional Automatic Pack. As weather conditions change, the Citroën Berlingo Multispace looks after you.



	V ¹	VTR	XTR
OPTION SUMMARY			
Family Pack – five separate foldable and removable rear seats (3 seats in row 2, 2 seats in row 3), front lateral airbags, front armrest and drawer under driver's seat, aircraft style tables on rear of seats, luggage cover (excluding boot liner) and 12 volt socket		o ^{1/2}	
Safety Pack – front lateral and curtain airbags, Electronic Stability Control (ESC) with traction control and Hill Start Assist function		o ³	
Safety Plus Pack – curtain airbags, Grip Control Electronic Stability Control (ESC) with traction control and Hill Start Assist function			o ^{3/4}
	o	● ⁵	● ⁵
Detection Pack – electrically heated and folding door mirrors, rear parking sensors and cruise control with speed limiter		o ^{3/6}	
		o ^{7/8}	o ⁷
Serenity Pack – electrically heated and folding door mirrors and rear parking sensors		o ^{6/9}	●
Automatic Pack – automatic digital air conditioning, automatic rain-sensitive windscreen wipers and automatic illumination of headlamps			o
Connecting Box – Bluetooth® system with USB socket		o ¹⁰	● ^{10/11}
	o	o	●
Chill Pack – air conditioning, MODUTOP®, longitudinal or exterior roof bars, scented air freshener and 12 volt socket		o ²	
eMyWay – colour satellite navigation, MP3 player compatible auxiliary socket, live traffic information, European mapping and Bluetooth® system (including media streaming)			o ^{10/11}
MODUTOP® – longitudinal or transversal exterior roof bars, scented air freshener and 12 volt socket		o ²	o ¹²
		o ⁶	
Fixed swan neck towbar		o ⁶	
Demountable swan neck towbar			
Metallic paint	o	o	o
Black paint	o	o	o

- Standard equipment
- o Optional factory fitted equipment

¹ Available on HDi 90 manual model only.

² Family Pack not compatible with MODUTOP® or Chill Pack.

³ Excludes e-HDi models.

⁴ When ordered, 16" 'Tikehau' alloy wheels are replaced by 15" 'Airflow' wheel covers.

⁵ Standard on e-HDi, optional on other models as part of Safety or Safety Plus Pack.

⁶ Fixed and demountable swan neck towbar are not compatible with Detection Pack or Serenity Pack.

⁷ Standard on e-HDi 90 ETG6 models.

⁸ Available as part of the Detection Pack on VTR models.

⁹ Available on e-HDi models only.

¹⁰ Mobile phone compatibility can vary by phone manufacturer. Please contact your Dealer for further compatibility information. When ordered, standard auxiliary socket is not present.

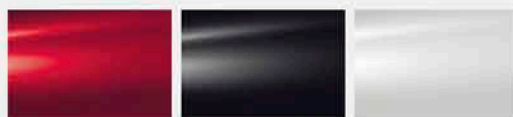
¹¹ Connecting Box and eMyWay are not compatible.

¹² 12 volt socket is standard on XTR models.

COLOUR, TRIM & WHEEL OPTIONS

THE CITROËN BERLINGO MULTISPACE IS AN INDIVIDUAL CHOICE.
SO IS THE PERFECT COLOUR...

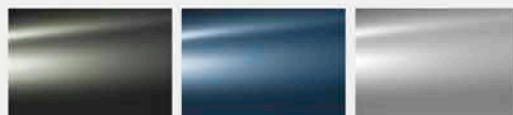
BODY COLOURS



Passion Red¹

Black

Polar White



Shark Grey (M)

Kyanos Blue² (M)

Arctic Steel (M)



Persamos Grey³ (M)

Belle Ile Blue⁴ (M)

Nocciola² (M)

WHEELS

15" 'AIRFLOW' WHEEL COVERS

Set of four
Tyres: 205/65 R15



Standard on VT, VTR
and XTR⁵ models

16" 'TIKEHAU' ALLOY WHEELS

Set of four
Tyres: 215/55 R16



Standard on XTR⁶ models

- Standard equipment
- Optional factory fitted equipment
- (M) Metallic

¹ Available on VT and VTR models.

² Available on VTR and XTR models.

³ Available on XTR models.

⁴ Available on VTR models.

TRIMS



Standard on VT models
Grey 'Gazyban' cloth



Standard on VTR models
Blue 'Quad' cloth



Standard on XTR models
Beige 'Tektonik' cloth

EQUIPMENT SPECIFICATION

	VT	VTR	XTR
SAFETY & SECURITY			
ABS with Electronic Brakeforce Distribution (EBD)	●	●	●
Emergency Braking Assistance (EBA)	●	●	●
Electronic Stability Control (ESC)	○	● ¹	● ¹
Driver's airbag	●	●	●
Passenger's airbag with cut-off device	●	●	●
Front lateral airbags		○ ²	●
Laminated windscreen	●	●	●
High level third brake light	●	●	●
Rear fog light with twin reversing lights	●	●	●
Automatic activation of hazard warning lights (in case of rapid deceleration or impact)	●	●	●
Fuel cut-off device	●	●	●
Height-adjustable front seat belts with pre-tensioners	●	●	●
Two outer rear Isofix child seat anchorage points	●	●	●
Height-adjustable front head restraints	●	●	●
Transponder immobiliser	●	●	●
Retractable and removable luggage cover	●	●	●
Super Plus Pack – high-frequency multi-function flip remote control central locking with deadlocks, electric child locks, front electric windows with 'one-touch' operation and electrically adjustable door mirrors	●	●	●
All Road Pack – underbody engine protection and raised suspension			● ³
DRIVER INFORMATION			
Multi-function on-board trip computer	●	●	●
Steel spare wheel	●	●	●
Audible driver's seatbelt 'unfastened' warning	●	●	●
Lockable fuel cap	●	●	●
Rev counter	●	●	●
Digital clock	●	●	●
Audible lights-on and key-in-ignition warning	●	●	●
Maintenance indicator	●	●	●
Coolant indicator	●	●	●
Fuel gauge	●	●	●
Handbrake warning light	●	●	●
Indicator warning light	●	●	●
Side headlamps and main beam warning lights	●	●	●

Colours and pictures shown are for illustration purposes only. Consult your Dealer for definitive colour and trim/upholstery details.

	VT	VTR	XTR
STYLE			
EXTERIOR			
Twin sliding side doors	•	•	•
Tailgate	•	•	•
Split opening tailgate with dark tinted rear side and tailgate windows			•
Black door mirrors	•		
Black front and rear bumpers	•		
Black side rubbing strips	•		•
Black door handles	•		•
Look Pack – daytime-running LEDs, front fog lights with chrome effect surround, chrome effect ‘u-shape’ front bumper insert, body colour side rubbing strips, front and rear bumpers, door handles and door mirrors		•	
XTR Look Pack – daytime-running LEDs, black side rubbing strips, front fog lights with chrome effect surround, chrome ‘u-shape’ front bumper insert and silver effect lower bumper insert			•
15" ‘Airflow’ wheel covers (set of four)	•	•	• ⁴
16" ‘Tikehau’ alloy wheels (set of four)			• ^{3/5}
Air deflector			• ⁶
INTERIOR			
PVC floor covering in boot	•		
Carpet floor covering in boot		•	•
COMFORT & CONVENIENCE			
Variable power assisted steering	•	•	•
Cruise control with speed limiter		• ⁷	• ⁸
Height and reach adjustable steering wheel	•	•	•
Cigarette lighter	•	•	•
Driver’s and passenger’s sunvisor	•	•	•
Front electric windows	•	•	•
Air conditioning	○	○	•
Child Pack – child surveillance mirror, side window blinds in row 2 and central storage console			•
Serenity Pack – electrically folding & heated door mirrors and rear parking sensors		○ ^{9/10}	•
12 volt socket		○ ¹¹	•
Aircraft style tables on rear of front seats with cup holders		○ ¹²	•

	VT	VTR	XTR
LIGHTING & VISIBILITY			
Tilt opening windows in row 2 and fixed windows in row 3	•	•	•
Two-speed intermittent front windscreen wipers	•	•	•
Automatic illumination of cabin lighting via a ceiling mounted button	•	•	•
Height-adjustable headlamps	•	•	•
Electrically adjustable door mirrors		•	•
Front fog lights		•	•
SEATING			
Head restraints	•	•	•
Row 2 split/folding 1/3-2/3, tiltable and removable bench seat	•	•	
Front armrests and storage drawer under driver’s seat		○ ¹²	•
Height adjustable driver’s seat		•	•
Row 2 three individual split/folding, tiltable and removable seats		○ ¹²	•
STORAGE			
Lidded glove box	•	•	•
Underfloor compartments in row 2	•	•	•
Overhead storage shelf		•	•
Front seat back pockets		•	•
Longitudinal roof bars			•
IN-CAR ENTERTAINMENT			
RDS stereo radio/MP3 compatible CD player and steering mounted controls	•	•	•
Auxiliary socket in glove box		• ¹³	• ^{13/14}
Connecting Box – Bluetooth® system with USB socket		○	•

• Standard equipment

○ Optional factory fitted equipment

¹ Standard on e-HDi, optional on other models as part of Safety or Safety Plus Pack.

² Available only as part of optional Family or Safety Packs.

³ Excludes e-HDi model.

⁴ Standard on e-HDi or if optional Safety Plus Pack is ordered.

⁵ Replaced with 15" ‘Airflow’ wheel covers if optional Safety Plus Pack is ordered.

⁶ HDi 115 manual model only.

⁷ Standard on e-HDi, optional on other versions as part of Detection Pack.

⁸ Standard on e-HDi, optional on other versions.

⁹ Fixed and demountable swan neck towbars are not compatible with Serenity Pack.

¹⁰ Available on e-HDi models only.

¹¹ Available only if optional MODUTOP®, Chill or Family Pack is ordered.

¹² Available only as part of optional Family Pack.

¹³ Not present if optional Connecting Box is ordered.

¹⁴ Not present if optional eMyWay is ordered.



FREEDOM OF CHOICE. THE CITROËN BERLINGO MULTISPACE'S ACCESSORIES SET YOU FREE TO ENHANCE THE CORE QUALITIES OF AN EXTRAORDINARY CAR. FROM TOMTOM TO TOWBALLS, FROM LUXURY TOUCHES TO PRACTICAL EQUIPMENT, YOU'LL FIND THE SOLUTIONS YOU'RE LOOKING FOR.

Visit www.accessories.citroen.co.uk to view the full range of Citroën Berlingo Multispace accessories.



> TOMTOM CHOICE

The latest range of TomTom navigation systems have arrived at Citroën, with improved looks and improved features. Available with a host of fabulous new user aids that put real-time travel information at your fingertips.



> 1 REVERSE PARKING SENSOR KIT

Parking becomes stress-free with Citroën's reverse parking sensor kit, which is subtly integrated into your new Citroën Berlingo Multispace's rear bumper.

> 2 FRONT MUDFLAPS

Made to measure mudflaps protect bodywork and enhance safety in poor weather.



> 3 ROOF BOXES

Add up to 430 litres of extra storage to your new Citroën Berlingo Multispace with a specially designed roof box.

> 4 MP3 ADAPTOR

Enjoy music from your own MP3 player and control your song selection through the dashboard stereo thanks to this clever little MP3 adaptor.

Not compatible with integrated satellite navigation systems.
MP3 player not included.

EFFICIENCY MINUS COMPROMISE. CITROËN HAS CREATED FUELEFFICIENT VEHICLES WITHOUT SACRIFICING DRIVER ENJOYMENT FOR SOME TIME. THE LATEST ADVANCES TAKE THIS FINE BALANCE FURTHER STILL...

WITH THE PROVEN CREDENTIALS AND ENVIRONMENTAL PERFORMANCE OF CITROËN HDi DIRECT INJECTION ENGINES AS INSPIRATION, e-HDi ADDS NEW TECHNOLOGY, SUCH AS A SMOOTH, SIMPLE STOP & START SYSTEM AND ETG GEARBOX. STOP & START PUTS THE ENGINE INTO IDLE MODE AS YOU DECELERATE AND STOPS ALTOGETHER AS YOU COME TO A HALT. THE MOMENT YOU TAKE YOUR FOOT OFF THE BRAKE, IT RESTARTS SILENTLY AND WITHOUT VIBRATION. THE RESULTS ARE A DRAMATIC REDUCTION IN BOTH FUEL CONSUMPTION AND CO₂ EMISSIONS, COMBINED WITH RESPONSIVE PERFORMANCE WHEREVER YOU GO.

We've also been equipping more of our vehicles with more environmentally friendly breakthroughs, such as our Efficient Tronic Gearbox (ETG), which boasts impressively greener credentials, with less pollution and up to 5% more economy than a conventional manual gearbox system. In addition, Citroën has expanded the use of the exceptionally efficient, self-regenerating Diesel Particulate Filter System in our models. Cleaner, greener driving without taking away from the drive – that's what you can continue to expect from Citroën.



› PURE TECHNOLOGY

Demonstrating Citroën's commitment to Créative Technologie, PureTech engines provide increased power with lower fuel consumption and emissions by adopting a smaller and lighter three cylinder configuration constructed of pressure-cast aluminium. In conjunction with low friction component coatings, improved air and fuel flow and optimised combustion, this allows engines to offer more power, better fuel economy and significantly lower CO₂ emissions.

› ELECTRIFYING. HOWEVER YOU LOOK AT IT

Forget what you know about electric cars. Citroën Survolt concept combines undiluted glamour with advanced sporting dynamics, then adds a 100% electric drivetrain. Outside, LED lights, voluptuous curves, two-tone charcoal and fuchsia paintwork, and a race-inspired rear spoiler meet your gaze. Inside, a stunning blend of curved chrome, swooping glass, high technology and organic forms welcomes you to an entirely new place. But this is no simple styling exercise. At heart, Survolt is even more radical, because although it is designed to thrill, it is powered purely by silent, efficient, clean electricity.

› AIRDREAM – A BENCHMARK

Citroën's environmental commitment and advanced efficiency are perfectly illustrated by Airdream. It's a benchmarking scheme that has three demanding criteria which a vehicle must achieve before it can wear the name. Firstly it must emit no more than 140g/km CO₂. Secondly it must be produced at a plant that meets the rigorous ISO 14001 certification and also it must be 95% recoverable. Only e-HDi, electric or Hybrid4 engined Citroëns currently qualify. It's no surprise that Citroën is one of the leaders in Europe for low CO₂ emissions.



All Citroën vehicles are designed to be 85% recyclable.

DRIVE YOUR WAY. GET BEHIND THE WHEEL OF YOUR NEW CITROËN BERLINGO MULTISPACE, WITH CITROËN'S RANGE OF FINANCE AND INSURANCE PRODUCTS.

CITROËN FINANCIAL SERVICES

PURCHASE PLAN

Own your vehicle with this flexible package designed to fit your budget.

ELECT 3

A new Citroën car every two or three years with monthly payments structured to suit your budget.

ELECT 4

Enjoy the convenience of a new car without the stress and hassle of ownership.

TO FIND OUT MORE ABOUT CITROËN PRODUCTS AND SERVICES, GO TO WWW.CITROEN.CO.UK OR CONTACT YOUR CITROËN DEALER.

FOR BUSINESS USERS

CITROËN CONTRACT MOTORING

HIRE PURCHASE

A tried and tested finance package that allows you to own your vehicle.

BUSINESS LEASE

An alternative to vehicle ownership that allows you to control your business cash flow and gain tax efficiencies.

LEASE PURCHASE

Own a vehicle with a finance solution that offers ultimate flexibility to complement your business cash flow.

CONTRACT HIRE

A non-ownership finance solution that keeps costs fixed and risks low.

FOR MORE INFORMATION ON CITROËN FLEET AND BUSINESS SALES, PLEASE CALL CITROËN FLEET CONNECT ON 08457 940 940 OR LOOK US UP AT WWW.CITROEN.CO.UK/FLEET

CITROËN INSURANCE

INSTANT COVER

To help you drive away your new car without delay, we offer Instant Cover insurance, providing you with 7 days comprehensive car insurance, for free!

MOTOR INSURANCE

Citroën Insurance has been designed specifically for our vehicles. You don't just get repairs you get Citroën expertise, service, quality and parts. So, when the time comes to renew your insurance cover, call Citroën Insurance on 0870 024 2725.

Lines open 8am - 8pm weekdays, 9am - 5pm Saturdays. Max call charge from a BT landline is 8p per minute. Calls from other networks may vary. Alternatively, visit www.citroen.co.uk for more information or to apply online.

Citroën Insurance is underwritten by UK Insurance Ltd which is authorised and regulated by the Financial Conduct Authority. Citroën Insurance is a trading style of Banque PSA Finance UK of Quadrant House, Princess Way, Redhill, Surrey, RH11 1QA.

ESSENTIAL CARE. CITROËNS ARE RENOWNED FOR THEIR RELIABILITY – AND THE CITROËN BERLINGO MULTISPACE IS NO EXCEPTION.

WITH THE ADDED REASSURANCE OF A WARRANTY, ROUTINE SERVICING AND MAINTENANCE, AS WELL AS 24-HOUR ROADSIDE ASSISTANCE, YOU ARE PROTECTED.

CITROËN WARRANTY

Every new Citroën car has the benefit of a 3 year* warranty package, plus a 12 year anti-perforation** warranty and a 3 year paint warranty.

* 2 years' unlimited warranty. No-fee customer option of 1 year's Dealer provided warranty, only on cars sourced from Citroën UK Limited. Note: Dealer provided warranty is limited to 60,000 miles for cars.

** Against all internal to external perforation to bodywork or underbody.

CITROËN ASSISTANCE

In response to a free telephone call in the UK, Citroën Assistance brings rapid expert roadside assistance to you in an emergency. It comes free of charge for a full year and operates 24 hours a day in all parts of the UK and Europe. Services include nationwide recovery for both car and passengers, a home call service, replacement vehicle, hotel accommodation and vehicle storage if required. Please note, Citroën Assistance only applies to incidents covered by the new vehicle warranty, and excludes non-vehicle faults, such as running out of fuel, mis-fuelling, loss of keys, lock-ins, road traffic accidents and punctures/wheel changes.

Full details are available on request from Citroën UK via cuk_contactcentre@citroen.com

CITROËN MAINTENANCE

From roadside assistance to replacing wear and tear parts or regular servicing, with Citroën Maintenance you have total peace of mind. For a one-off fee or low monthly payment, our experienced engineers will take care of your Citroën, whatever happens.

To find out more, contact your Citroën Dealer or Citroën Authorised Repairer.

CITROËN SERVICING

Available up to 1 year from your vehicle's registration date, but before its first chargeable service, a Citroën Servicing Package enables you to pay in advance for your vehicle's servicing needs for 3 years/35,000 miles.

For further information, please contact your Citroën Dealer.

GLOSSARY

› e-HDi DIESEL ENGINE

The e-HDi 90 Airdream ETG6 engine is capable of 61.4mpg and CO₂ emissions of just 120g/km combined with the ETG gearbox. It has a reversible starter-alternator that works in tandem with an e-booster to provide a seamless Stop & Start function. Going further than other similar systems, the e-HDi's Stop & Start puts the engine into idle mode while decelerating before coming to a complete standstill. This reduces consumption by 15% in urban driving.

› HIGH-PRESSURE DIRECT INJECTION DIESEL ENGINE

Our HDi diesel engines operate with the fuel under extremely high pressure, enabling microscopically precise injection control. With this level of management it's possible to inject at different times during the same engine stroke allowing total control over the combustion process. This has allowed our engineers to reduce carbon monoxide emissions by 40%, unburned hydrocarbons by 50% and engine particulates by 60%. Fuel consumption is 20% lower than a prechamber diesel engine, resulting in an equivalent reduction in CO₂ emissions and thanks to the torque available at low engine speed it could be argued that driveability is now better than in petrol engined cars.

› ISOFIX

A standardised and more simple method for installing child seats, each seat is 'clicked' into place via a three point system. On the Citroën Berlingo Multispace, Isofix is installed on the two outer rear seats.

› DIESEL PARTICULATE FILTER SYSTEM (DPFS)

Our unique DPFS collects exhaust particulates (soot) that would have been bound for the air around us and burns them off at 550°C. This means that 'black smoke' is eliminated completely. And because the filter is constantly burning the particulates it is self-cleaning and requires no maintenance.

› ANTI-LOCK BRAKING SYSTEM (ABS)

Computer-controlled braking assistance designed to prevent the wheels from locking under extreme braking. This enables the vehicle to continue being steered and therefore controlled during this braking incident.

› ELECTRONIC BRAKEFORCE DISTRIBUTION (EBD)

A conventional ABS system cannot account for any of the four wheels wanting to lock more quickly than the others (for example, two of the wheels may be on snow and two on tarmac). EBD reads the deceleration rate of each wheel individually and applies the ABS principles accordingly.

› EMERGENCY BRAKING ASSISTANCE (EBA)

As drivers we find it difficult to instinctively brake very hard, but this is often what is needed in those rare emergency situations. The EBA system recognises our 'attempt' to brake hard and in combination with the ABS and EBD systems instantly applies the maximum stopping power possible.

› ELECTRONIC STABILITY CONTROL (ESC)

This is computer-controlled traction assistance and is provided primarily through the braking systems. The ESC's control unit constantly compares where the driver intends going (through the position of the steering wheel) with where the vehicle is actually going and, if necessary, makes speed corrections to each wheel individually through braking or engine torque to keep the vehicle 'in line'.

› ON-BOARD TRIP COMPUTER

Citroën Berlingo Multispace's multi-function on-board trip computer provides you with information at your fingertips. At the touch of a button you can view a range of data like fuel consumption, average speed and mileage possible at your current fuel level.

› CONNECTING BOX

Integrated Bluetooth® hands-free phone function with USB socket and jack to plug in a portable MP3 player.

› EMyWay COLOUR SATELLITE NAVIGATION

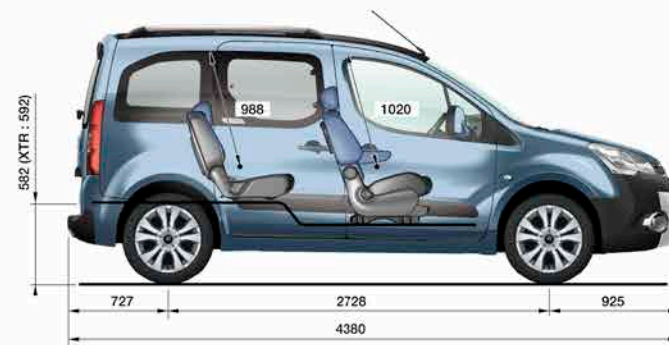
eMyWay is completely integrated into the vehicle which avoids the risk of theft. The design has been created for ease of use and with steering wheel controls, navigating from your phone to the satellite navigation couldn't be any easier. eMyWay allows you to define routes, stops and places of interest with the added benefit of vocal instruction. eMyWay also provides live traffic updates of any congestion spots or delays. A GPS integrated aerial is built into the vehicle, to maximise the reception of satellite information; therefore permitting an accurate location of the car.

› GRIP CONTROL ELECTRONIC STABILITY CONTROL (ESC)

Grip Control Electronic Stability Control (ESC) is a traction control system which improves vehicle traction in specific driving conditions such as snow, mud and sand, via a dashboard-mounted dial with 5 different modes: standard ESC, Snow, All Road, Sand and ESC Off.

The system adapts its functionality according to the mode selected by the driver. The Grip Control Electronic Stability Control (ESC) with traction control and Hill Start Assist function includes Michelin Latitude Tour HP 'Mud and Snow' tyres (205/65 R15), whose suitability for all-terrain use optimises traction on a multitude of surfaces.

DIMENSIONS



All measurements are in millimetres.



This brochure is made from paper from a well-managed forest. Citroën support responsible use of forest resources.

Please don't throw me away, give me to a friend or recycle me.

NOTE: Every endeavour has been made to ensure that the information and details contained in this brochure were accurate at the time of going to press January 2014. However the company reserves the right, whilst preserving the essential characteristics of the models described, to introduce at any time modifications, changes of details, equipment or accessories. Every effort will be made to bring this brochure up to date, but in order to avoid any misunderstandings please consult your Dealer. For full details of Citroën Care for Car and Driver, please see the full manufacturer's price list. The Citroën Website contains full information on all Citroën products and offers available in the UK, together with details of our environmental and recycling policies. The site address is: www.citroen.co.uk or you can contact Citroën directly via cuk_contactcentre@citroen.com

CITROËN prefers TOTAL

CITROËN UK Ltd. Pinley House, 2 Sunbeam Way, Coventry CV3 1ND.
www.citroen.co.uk

CRÉATIVE TECHNOLOGIE

