

CITROËN BERLINGO MULTISPACE



CITROËN



BERLINGO
MULTISPACE



THE CITROËN RANGE

Here at Citroën we have come a long way since we created the world's first all-steel bodied car. Today we are recognised for our innovative technology and original designs. Our world-leading, fuel-efficient engines respect the environment and our outstanding safety features guarantee one of the safest driving environments available. We are fully committed to delivering outstanding customer service to back up the fantastic Citroën Model Range.

We're proud to be part of such an iconic brand and we look forward to helping you choose a car that means you too can enjoy the driving experience offered by Citroën's Créative Technologie.



A handwritten signature in black ink, consisting of a stylized 'S' and 'L' followed by a horizontal line.

Stéphane Le Guevel
Director General
Citroën UK





1924

Citroën creates the B10 and the world's first all-steel bodied car is born.

1949

Twenty five years later, the iconic 2CV is launched and stays in production for over 5 decades!

A HISTORY...



1989

The prestigious XM makes its debut, showcasing Citroën's advanced Hydractive computer controlled selflevelling suspension.

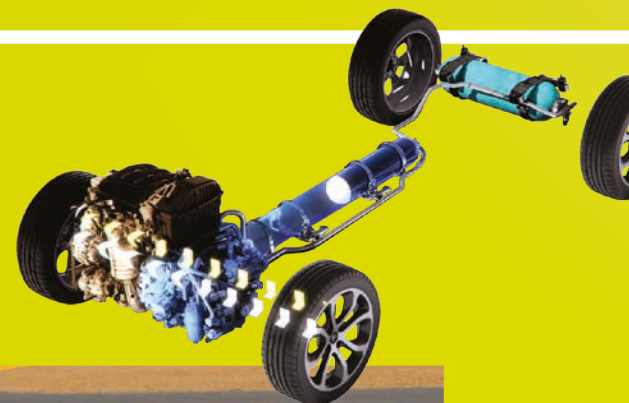


2008

The C4 WRC proves to be an all-conquering World Rally Champion. Citroën takes the Manufacturers' Title in 2008, 2009 and 2010.

2010

The innovations keep coming – quietly – with Citroën Survolt concept. A thrilling, clean, whisper quiet electric car.



2013

Never content to rest on our laurels, the innovative Citroën C3 Hybrid Air is unveiled at the Geneva Motor Show.

...OF INNOVATION



YOU & YOUR BERLINGO MULTISPACE

Citroën Berlingo Multispace is a true all-in-one vehicle, elegantly encompassing everything you need on the move. Its spacious, comfortable interior is ingeniously flexible, while the bold, simple exterior is surprisingly compact. Now with fresh design cues and plenty of new technology, it's more complete than ever.



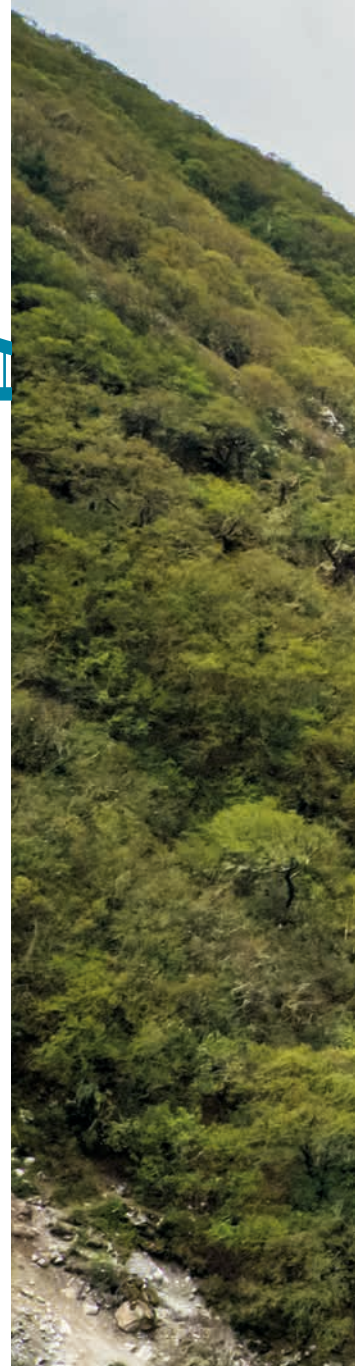
CITROËN BERLINGO

GO BOLDLY

With bags of character and an instantly recognisable profile, Citroën Berlingo Multispace has genuine presence, especially with its new expressive details. The face is now enhanced by fresh bumper and radiator styling and perfectly blended with the proud sweep of the signature double-chevron logo.



Although only 4.38m from nose to tail, Citroën Berlingo Multispace has a head-turning boldness and assertive personality that's really unique.

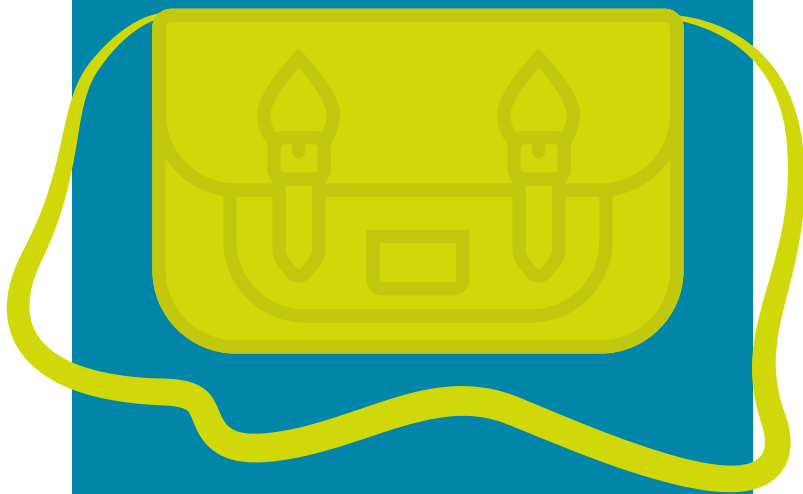




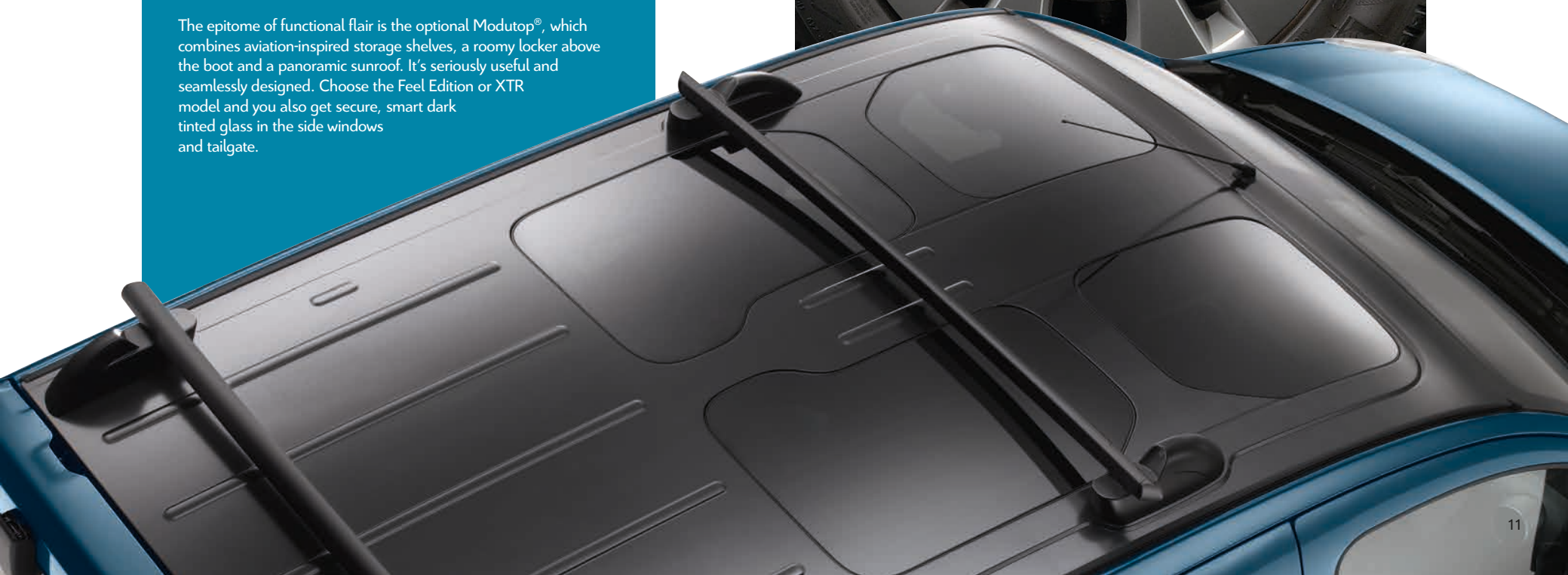
FUNCTIONAL FLAIR

Citroën Berlingo Multispace may be a roomy and practical car, but it's also packed with stylish features. Feel Edition and XTR models now have the striking 16 inch 'Tikehau' alloy wheels and repositioned LED Daytime Running Lights for head-turning style and maximum visibility.





The epitome of functional flair is the optional Modutop®, which combines aviation-inspired storage shelves, a roomy locker above the boot and a panoramic sunroof. It's seriously useful and seamlessly designed. Choose the Feel Edition or XTR model and you also get secure, smart dark tinted glass in the side windows and tailgate.



MAXIMUM COMFORT, MINIMUM CLUTTER

The interior of Citroën Berlingo Multispace is carefully designed to keep people comfortable and relaxed, and their belongings safely stowed away. It's also shaped to maximize natural light. The optional Modutop® contributes in every sense, offering up to 170 litres of ceiling-mounted space in an ingenious central storage area, individual air vents and large, light-loving glass panels.



From Feel trim level, you can relax in air-conditioned comfort and enjoy each journey with technology such as cruise control and speed limiter on your side. Feel Edition and XTR models also include a leather trimmed steering wheel.



SIMPLY SOPHISTICATED

Citroën Berlingo Multispace offers a wealth of the latest technology to make your life on the move simpler and more enjoyable. Crisp, bright Daytime Running Lights and powerful fog lights on Feel Edition and XTR models provide a clear visual signature and enhance safety too, whilst rear parking sensors on XTR versions take the hassle out of the trickiest manoeuvres.

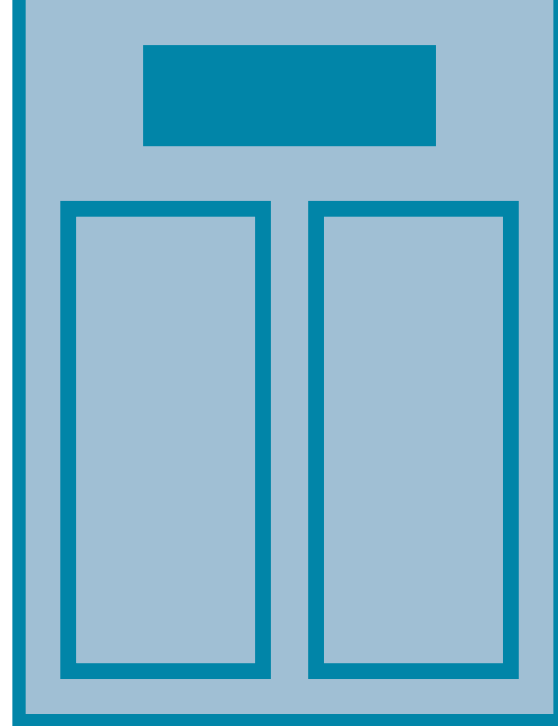


Inside, the elegant 7 inch Touchscreen on the XTR trim level (optional on Feel Edition) focuses all your useful technology in one clear, easy to use place. From here you can control navigation, DAB radio, audio streaming, your MP3 player and phone calls, including hands-free Bluetooth® connection. You can check and fine-tune vehicle settings too. Choose a Feel Edition model and you benefit from the console mounted Connecting Box with Bluetooth® handsfree and a USB socket.



EVERYONE'S WELCOME

Bright, roomy and with commanding views in every direction, the interior of Citroën Berlingo Multispace extends a warm welcome. The standard 5-seat configuration provides three individual and completely removable second row seats for relaxed journeys and genuine versatility.



WELCOME

Choose the optional Family Pack and you gain an extra pair of generous seats that can be folded seamlessly and effortlessly into the boot floor. Whether you're travelling in the front row or row three, there's no compromise, because Citroën Berlingo Multispace is designed to accommodate up to seven travellers in proper comfort.





CLEVER ON THE OUTSIDE

A car that offers lots of usable space for people and their belongings needs to be effortlessly accessible and easy to use. That's why Citroën Berlingo Multispace can be chosen with either one or two sliding rear doors, and on Feel Edition and XTR models a split opening tailgate, so you can quickly pop smaller things into the boot through the window. XTR level brings you tough, practical longitudinal roof bars, which are also part of the Modutop® package, where specified.





Further exterior touches you'll appreciate include electrically adjustable door mirrors for perfect visibility minus hassle.



INSPIRED ON THE INSIDE

Innovative, friendly and seriously spacious, Citroën Berlingo Multispace offers an amazing choice of storage solutions and practical details. It's built for life. There are underfloor compartments in row two and a storage drawer beneath the driver's seat, plus clever overhead storage from Feel trim level. It's so easy to declutter and keep things discreetly stowed away.

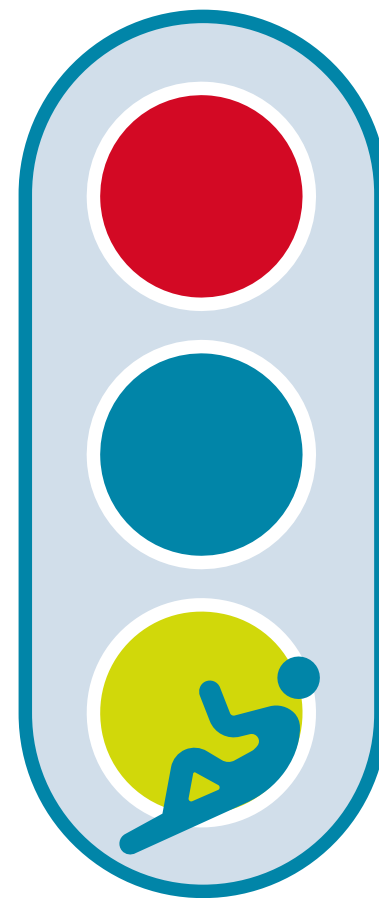


Feel versions also have a height adjustable driver's seat and on XTR models you can make the most of three really comfortable individual row two seats with aircraft style tables and cup holders. A 12 volt socket in the boot is just one more useful touch.



STOP, GO, RELAX.

Set off in Citroën Berlingo Multispace and you can relax. There's a host of advanced safety technology on your side. ABS with Electronic Brakeforce Distribution and Emergency Braking Assistance keeps you on track and in control should you need to brake suddenly and ensures just the right amount of pressure is applied for safe stopping.



Electronic Stability Control keeps you firmly on course if your wheels lose grip, by making super-fast adjustments to braking and engine speed.







A VISION OF SAFETY

Climb into Citroën Berlingo Multispace and there's an all-round sense of airiness. This is because of the exceptionally large glazed areas, from the sweeping panoramic windscreen to the deep side windows and tailgate. Your view out provides maximum visibility from every angle for safe progress.

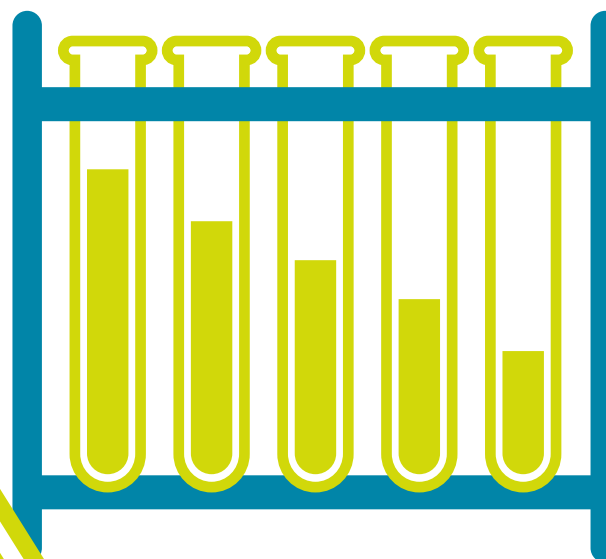
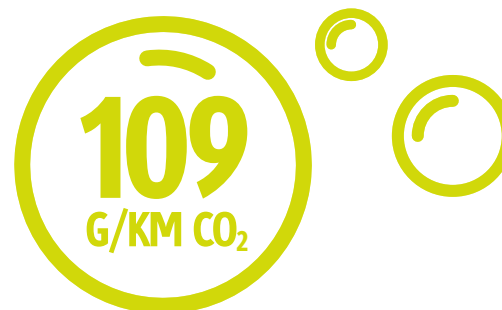
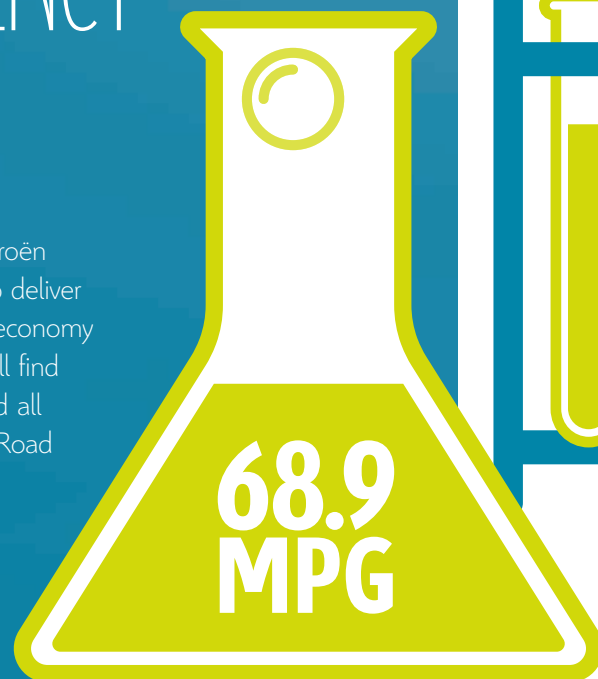
On XTR models you also gain the rear passenger observation mirror which allows you to keep an eye on the family without being distracted from the road ahead. And if you need to brake really hard to avoid the unforeseen, there's automatic activation of the hazard warning lights, so following traffic can see exactly what's happening.





YOUR EFFICIENCY FORMULA

The engine range available for Citroën Berlingo Multispace is designed to deliver seriously low emissions, excellent economy and refined driving character. You'll find these qualities in each version, and all diesel options have zero first year Road Fund Licence too.



The BlueHDi 100 S&S and BlueHDi S&S ETG6 versions produce an amazing 109g/km of CO₂ and all BlueHDi engines also cut nitrogen oxide emissions, while meeting the tough Euro 6 standard. In the super-efficient BlueHDi 75 manual you can achieve up to 65.7mpg and still just 113 g/km CO₂.





FLEXIBILITY TIMES FOUR



The Citroën Berlingo Multispace excels at what matters. It's roomy and versatile, good to drive and efficient, bold, stylish and safe. With a distinctive personality all of its own, this is a car that celebrates freedom of choice through four impressive models, each with its individual balance of design and technology. Choosing the version that fits perfectly into your family will be the first of many inspiring journeys.



TOUCH. RIGHT FROM THE START.

The fundamentals that make Citroën Berlingo Multispace special are all here from the start. Touch models have a generous helping of useful technology, stylish details and practical innovations that work together beautifully.



FEEL. REFINED IN EVERY SENSE.

Feel models feature aesthetic and practical refinements from nose to tail. Your chosen body colour now appears on more elements, enhancing the overall design, while air conditioning and extra storage solutions make the interior even more comfortable and useful.





FEEL EDITION. SPACE FOR STYLE.

From 16 inch 'Tikehau' alloy wheels to the gleaming chrome chevrons and body coloured lower rear bumpers, the Feel Edition focuses on style, while features such as the Connecting Box add ever more practicality too.



XTR. EVERY ANGLE COVERED.

The beauty of choosing XTR is that you don't really have to choose at all. Everything that makes this car a great place to travel is included. Make yourself at home in the ultimate Citroën Berlingo Multispace.





SAY IT IN COLOUR

Citroën Berlingo Multispace is available in nine vibrant and striking body colours, including the new Cumulus Grey and Moka Grey. Each shade brings out different facets, highlights and details. Choosing your shade is a very personal decision and a great opportunity to express yourself!

Moka Grey (M)²

Nocciola (M)²

Cumulus Grey (M)³

Arctic Steel (M)¹

Shark Grey (M)



(M) Metallic. Please note: Colours and pictures shown are for illustration purposes only. Please consult your Dealer for definitive colour and trim/upholstery details. ¹ Not available on Feel Edition and XTR versions. ² Not available on Touch and Feel Edition versions. ³ Available on Feel Edition and XTR versions only.

Three stylized white arches of varying heights are positioned across the top half of the page, set against a solid yellow background. A horizontal white line runs across the middle of the page, intersecting the arches.

OVER TO YOU

Here is where Citroën Berlingo Multispace comes to life. Take some time to look at the product specification brochure and then begin to shape the car that reflects you in every sense. Then you can really get things moving. Simply contact your local Authorised Citroën Dealer to arrange a test drive.

To find out more go to citroen.co.uk





CRÉATIVE TECHNOLOGIE

www.citroen.co.uk | CITROËN UK Ltd. Pinley House, 2 Sunbeam Way, Coventry CV3 1ND.

CITROËN prefers **TOTAL**



This brochure is made from paper from a well-managed forest. Citroën support responsible use of forest resources. Please don't throw me away, give me to a friend or recycle me.

NOTE: Images and specification descriptions are dependent on trim level and options specified. Every endeavour has been made to ensure that the information and details contained in this brochure were accurate at the time of going to press August 2016. However the company reserves the right, whilst preserving the essential characteristics of the models described, to introduce at any time modifications, changes of details, equipment or accessories. Every effort will be made to bring this brochure up to date, but in order to avoid any misunderstandings please consult your Dealer. The Citroën UK Website contains full information on all Citroën products and offers available in the UK, together with details of our environmental and recycling policies. The site address is: www.citroen.co.uk or you can contact Citroën directly via cuk_contactcentre@citroen.com.

CITROËN **BERLINGO MULTISPACE**
PRODUCT SPECIFICATIONS



BERLINGO
MULTISPACE

OVER TO YOU...

Citroën Berlingo Multispace is the practical pioneer that takes your life in its stride. Flexible space, plentiful equipment and real comfort are carefully balanced with cutting edge economy and efficiency to create an innovative place for 5 or 7 people. Consider the fresh, expressive design elements at the front, the compact but roomy profile and the useful new technology and start to imagine your version of this unique family car.

	Touch	Feel	Feel Edition	XTR
PETROL ENGINE AVAILABILITY				
VTi 95 manual	•	•	•	
PureTech 110 S&S manual		•		
DIESEL ENGINE AVAILABILITY				
BlueHDi 75 manual		•		
BlueHDi 100 manual		•	•	•
BlueHDi 100 S&S manual			•	•
BlueHDi 100 S&S ETG6		•	•	•
BlueHDi 120 S&S 6-speed manual				•

TOUCH. RIGHT FROM THE START.

Citroën Berlingo Multispace Touch specification includes:

- ABS with Electronic Brakeforce Distribution and Emergency Braking Assistance
- Electronic Stability Control
- Hill Start Assist
- Automatic activation of hazard warning lights (in case of rapid deceleration)
- 2 rear row ISOFIX mounting points
- **Touch Look Pack** – 15 inch 'Feroe' steel wheels, silver effect 'U-shape' chevrons, black front bumpers, black rear number plate moulding, black door mirrors, black side rubbing strips, black door handles
- Three retractable rear head restraints
- Front electric windows and electrically adjustable door mirrors
- Grey 'Gazyban' cloth
- Variable power assisted steering
- Height and reach adjustable steering wheel
- Underfloor compartments in row 2
- Trip computer
- RDS stereo radio/MP3 compatible CD player and steering mounted controls and auxiliary socket



FEEL. REFINED IN EVERY SENSE.

Citroën **Berlingo Multispace Feel** specification in addition to Touch includes:

- **Feel Look Pack** – 15 inch 'Feroe' steel wheels, body colour front bumpers, body colour door mirrors, body colour rear number plate moulding
- Grey 'Quad' cloth
- Height-adjustable driver's seat
- Air conditioning
- Cruise control with speed limiter
- Carpeted boot



XTR. EVERY ANGLE COVERED.

Citroën **Berlingo Multispace XTR** specification in addition to Feel Edition includes:

- Front lateral airbags
- Longitudinal roof bars
- **XTR Look Pack** – 16 inch 'Tikehau' alloy wheels (excludes ETG6 model), chrome chevrons, black upper bumper inserts, front and rear silver effect lower bumper insert, body colour front and rear bumpers, black side rubbing strips, gloss black door mirrors
- **All Road Pack** – underbody engine protection and raised suspension (Excludes ETG6 model)
- **Serenity Pack** – electrically folding, heated door mirrors, rear parking sensors
- Grey 'Liberia' Cloth
- Three individual seats in row 2
- Storage drawer under driver's seat
- **Child Pack** – rear passenger observation mirror, side window blinds in row 2 and central storage console
- 12 volt socket in rear compartment
- 7 inch Touchscreen, DAB digital radio/MP3 audio system with 4 speakers, Bluetooth® handsfree, USB socket and steering mounted controls

FEEL EDITION. SPACE FOR STYLE.

Citroën **Berlingo Multispace Feel Edition** specification in addition to Feel includes:

- Front fog lights
- LED Daytime Running Lights (DRLs)
- **Feel Edition Look Pack** – 16 inch 'Tikehau' alloy wheels, chrome chevrons, body colour upper bumper inserts, body colour side rubbing strips, body colour rear bumpers
- Split opening tailgate with dark tinted rear side and tailgate windows
- Leather steering wheel
- **Connecting Box** – Bluetooth® handsfree with USB socket



OPTIONS

Where there's space for people, there's room for personalisation, so Citroën Berlingo Multispace provides plenty of opportunity to be individual. From that just-so body colour to in-car entertainment, practical touches and luxury details, there are lots of enticing and useful options to choose from. To make your decision process easier, we've created a series of carefully themed packs.



CITROËN BERLINGO MULTISPACE OPTION SUMMARY					Touch	Feel	Feel Edition	XTR	BASIC R.R.P.	V.A.T.	TOTAL R.R.P.
PAINT											
Metallic paint					o	o	o	o	£433.33	£86.67	£520.00
Black paint					o	o	o	o	£300.00	£60.00	£360.00
PACKS											
Safety Pack – front lateral and curtain airbags						o ¹	o		£266.67	£53.33	£320.00
Active Safety Pack – Active City Brake and automatic lights and windscreen wipers								o	£375.00	£75.00	£450.00
Automatic Pack – automatic air conditioning, automatic lights and windscreen wipers								o	£387.50	£77.50	£465.00
Serenity Pack – electrically folding, heated door mirrors, rear parking sensors						o	o	•	£225.00	£45.00	£270.00
Serenity Pack with front parking sensors							o		£400.00	£80.00	£480.00
Serenity Pack with front parking sensors								o	£175.00	£35.00	£210.00
Serenity Pack with reversing camera								o	£175.00	£35.00	£210.00
Serenity Pack with front parking sensors and reversing camera								o	£350.00	£70.00	£420.00
Family Pack – five separate, foldable and removable rear seats (3 seats in row 2 and 2 in row 3), front lateral airbags, aircraft style tables on rear of seats, luggage cover (excluding boot liner), 12 volt socket						o ^{2/3/4}			£708.33	£141.67	£850.00
EXTERIOR STYLE											
MODUTOP®, longitudinal or transversal roof bars, scented air freshener and 12 volt socket						o ¹		o	£583.33	£116.67	£700.00
SAFETY AND SECURITY											
Curtain airbags						o ⁵		o	£137.50	£27.50	£165.00
COMFORT & CONVENIENCE											
Air conditioning					o				£541.67	£108.33	£650.00
Automatic air conditioning								o	£241.67	£48.33	£290.00
Fixed swan neck towbar						o ⁶	o ⁶		£329.17	£65.83	£395.00
Demountable swan neck towbar						o ⁶	o ⁶		£420.83	£84.17	£505.00
IN-CAR ENTERTAINMENT											
7 inch Touchscreen and eMyWay – colour satellite navigation, live traffic information							o		£625.00	£125.00	£750.00
eMyWay – colour satellite navigation, live traffic information								o	£333.33	£66.67	£400.00

- o Optional factory fitted equipment
- ◇ No cost option

Some options may change CO₂ emissions, please check with your local dealer.

¹ Not available on Family Pack version.

² Available on BlueHDi 100 manual version only.

³ Increases the CO₂ emissions which impacts VED band.

⁴ Not compatible with optional MODUTOP®.

⁵ Applies to Family Pack version only.

⁶ Not compatible with rear parking sensors.



COLOURS, TRIMS AND WHEEL OPTIONS



Grey 'Gazyban' cloth
Standard on Touch versions



Grey 'Quad' cloth
Standard on Feel and Feel Edition versions



Grey 'Liberia' cloth
Standard on XTR versions

15 inch 'Feroe' wheel covers

Standard on Touch and Feel versions



15 inch 'Airflow' wheel covers

Standard on XTR ETG6 versions

16 inch 'Tikehau' alloy wheels

Standard on Feel Edition and XTR versions (excl. ETG6 versions)



EQUIPMENT SPECIFICATION



	Touch	Feel	Feel Edition	XTR
SAFETY & SECURITY				
ABS with Electronic Brakeforce Distribution and Emergency Braking Assistance	•	•	•	•
Electronic Stability Control	•	•	•	•
Hill Start Assist	•	•	•	•
Tyre pressure sensors	•	•	•	•
Driver and front passenger airbags	•	•	•	•
Front lateral airbags		o ^{1/2}	o ^{1/2}	•
Laminated windscreen	•	•	•	•
Automatic activation of hazard warning lights (in case of rapid deceleration)	•	•	•	•
Height-adjustable front seat belts	•	•	•	•
Unfastened seat belt warning for front seats	•	•	•	•
2 rear row ISOFIX mounting points		•	•	•
LIGHTING AND VISIBILITY				
Front fog lights			•	•
LED Daytime Running Lights (DRLs)			•	•
Tilt opening windows in row 2 and fixed windows in row 3	•	•	•	•
DRIVER INFORMATION				
Trip computer	•	•	•	•
Rev counter	•	•	•	•

- Standard equipment
- o Optional factory fitted equipment

¹ Standard on Family Pack version.

² Available when optional Safety Pack is ordered.

	Touch	Feel	Feel Edition	XTR
STYLE				
EXTERIOR				
Touch Look Pack – 15 inch 'Feroe' steel wheels, silver effect 'U-shape' chevrons, black front bumpers, black rear number plate moulding, black door mirrors, black side rubbing strips, black door handles	•			
Feel Look Pack – 15 inch 'Feroe' steel wheels, body colour front bumpers, body colour door mirrors, body colour rear number plate moulding		•		
Feel Edition Look Pack – 16 inch 'Tikehau' alloy wheels, chrome chevrons, body colour upper bumper inserts, body colour side rubbing strips, body colour rear bumpers			•	
XTR Look Pack – 16 inch 'Tikehau' alloy wheels, chrome chevrons, black upper bumper inserts, front and rear silver effect lower bumper insert, body colour front and rear bumpers, black side rubbing strips, gloss black door mirrors				• ³
Split opening tailgate with dark tinted rear side and tailgate windows			•	•
INTERIOR				
Carpeted boot		•	•	•
Leather steering wheel			•	•
STORAGE				
Retractable and removable luggage cover	•	•	•	•
Storage drawer under driver's seat	•	•	•	•
Underfloor compartments in row 2	•	•	•	•
Overhead storage shelf		•	•	•

	Touch	Feel	Feel Edition	XTR
COMFORT & CONVENIENCE				
Remote central locking with deadlocks	•	•	•	•
Front electric windows	•	•	•	•
Cruise control with speed limiter		•	•	•
Electrically adjustable door mirrors	•	•	•	•
Tailgate with rear heated window and wash-wipe	•	•	•	•
Longitudinal roof bars		o ⁴		•
Height and reach adjustable steering wheel	•	•	•	•
Air conditioning	o	•	•	•
Aircraft style tables with cup holders row 2		• ¹		•
12 volt socket in rear compartment		o ⁴		•
Cigarette lighter	•	•	•	•
All Road Pack – underbody engine protection and raised suspension (Excludes ETG6 model)				• ⁵
Serenity Pack – electrically folding, heated door mirrors, rear parking sensors		o	o	•
Child Pack – rear passenger observation mirror, side window blinds in row 2 and central storage console				•

	Touch	Feel	Feel Edition	XTR
SEATING				
Height-adjustable driver's seat		•	•	•
Row 2 split/folding, tiltable and removable bench seat	•	• ⁶	•	
Three individual seats in row 2		• ¹		•

	Touch	Feel	Feel Edition	XTR
IN-CAR ENTERTAINMENT				
RDS stereo radio/MP3 compatible CD player and steering mounted controls and Auxiliary socket	•	•		
Connecting Box – Bluetooth® handsfree with USB socket			• ⁷	
7 inch Touchscreen , DAB digital radio/MP3 audio system with 4 speakers, Bluetooth® handsfree, USB socket and steering mounted controls				• ⁷

³ 16 inch alloy wheels excludes ETG6 versions

⁴ Available when optional MODUTOP® or Family Pack is ordered.

⁵ Excludes ETG6 versions.

⁶ Excludes Family Pack version.

⁷ Mobile phone compatibility can vary by phone manufacturer. Please consult your dealer for further compatibility information.

TECHNICAL SPECIFICATION



68.9mpg

on BlueHDi 100 S&S manual



109g/km CO₂

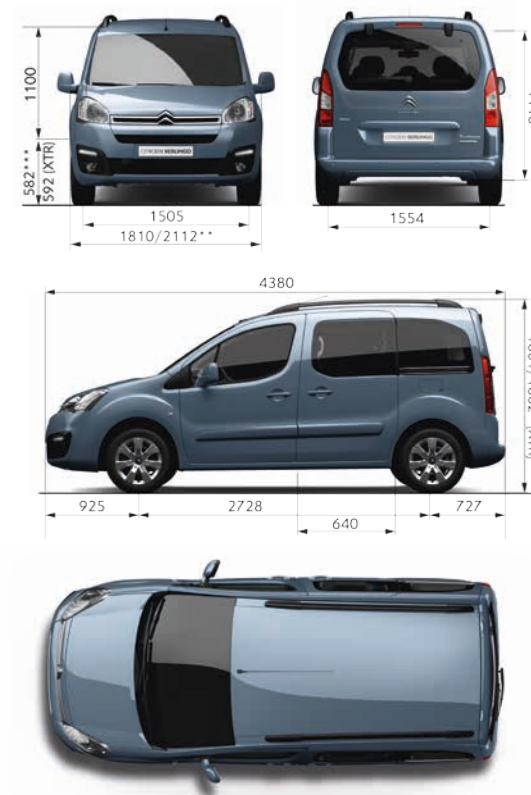
on BlueHDi 100 S&S manual

	PETROL ENGINES	
	VTi 95 manual	PureTech 110 S&S manual
ENGINE		
Capacity (cc)	1598	1199
Cylinders	4 in line	3 in line
Max power CEE (kW/rpm)	72/6000	81/5500
Max torque CEE (Nm/rpm)	152/3500	205/1500
Fuel system	Multi-point electronic fuel injection	Direct injection with intercooler
Euro status	Euro 6	Euro 6
TRANSMISSION		
Transmission type	Five speed manual	Five speed manual
(All figures driver alone)	PERFORMANCE	
Max speed (mph)	108	112
0-62mph (secs)	12.8	12.2
Standing 1000m (secs)	34.2	33.7
(Official Government test fuel consumption figures)	ECONOMY Litres/100km (mpg)	
Urban cycle	8.2 (34.4)	6.0 (47.1)
Extra urban	5.3 (53.3)	4.6 (61.4)
Combined	6.4 (44.1)	5.1 (55.4)
CO ₂ EMISSIONS (g/km)		
	148	119
Please note: the maximum plated weights must not be exceeded	WEIGHTS (kg)	
Mass in service	1550	1490
Max laden weight	2000	2010
Max towing weight braked/unbraked	1300/690	1300/660
Max roof rack load	100	100
BRAKES		
	Front ventilated discs, rear discs.	
STEERING		
	Variable power assisted steering	
Number of turns lock to lock	2.88	2.88
Turning circle between kerbs (m)	11.0	11.0
SUSPENSION		
	Independent MacPherson strut front with independent trailing arm rear suspension	
FUEL TANK CAPACITY Litres (gallons)		
	60 (13.2)	60 (13.2)
EXTERIOR DIMENSIONS (mm)		
Length/Width/Height	4384/1810/1852-1862*	
Wheelbase	2728	
BOOT VOLUME & DIMENSIONS		
Seats up - below parcel shelf (litres)	675	675
Seats down - up to roof (litres)	3000	3000

DIESEL ENGINES					
BlueHDi 75 manual	BlueHDi 100 manual	BlueHDi 100 manual with Family Pack (7 seats)	BlueHDi 100 S&S manual	BlueHDi 120 S&S 6-speed manual	BlueHDi 100 S&S ETG6
1560 4 in line 55/3500 233/1750	1560 4 in line 73/3750 254/1750	1560 4 in line 73/3750 254/1750	1560 4 in line 73/3750 254/1750	1560 4 in line 88/3500 300/1750	1560 4 in line 73/3750 254/1750
High pressure direct diesel injection					
Euro 6	Euro 6	Euro 6	Euro 6	Euro 6	Euro 6
Five speed manual	Five speed manual	Five speed manual	Five speed manual	Six speed manual	Six speed ETG
97 15.1 36.6	103 12.4 34.4	103 13.4 35.2	103 12.4 34.4	109 11.4 33.3	103 14.3 35.9
5.1 (55.4) 3.9 (72.4) 4.3 (65.7)	5.1 (55.4) 3.9 (72.4) 4.3 (65.7)	5.1 (55.4) 3.9 (72.4) 4.3 (65.7)	4.6 (61.4) 3.9 (72.4) 4.1 (68.9)	4.9 (57.6) 4.2 (67.3) 4.4 (64.2)	4.3 (65.7) 4.1 (68.9) 4.2 (67.3)
113	113	113	109	115	109
1585 2060 1300/720 100	1585 2060 1300/720 100	1615 2220 1200/740 100	1590 2060 1300/720 100	1630 2085 1300/730 100	1620 2075 1300/730 100
Front ventilated discs, rear discs.					
Variable power assisted steering					
2.88 11.0	2.88 11.0	2.88 11.0	2.88 11.0	2.88 11.0	2.88 11.0
Independent MacPherson strut front with independent trailing arm rear suspension					
53 (11.6)					
4384/1810/1852-1862* 2728					
675 3000	675 3000	100 3000	675 3000	675 3000	675 3000

DIMENSIONS

All measurements are in millimetres.



* XTR models only

All diesel engines are fitted with Diesel Particulate Filter System

MPG figures are achieved under official EU test conditions, intended as a guide for comparative purposes only, and may not reflect actual on-the-road driving conditions.

" CITROËN & YOU

Finance and Insurance should reflect you and your needs, just as your chosen car does. Here are the products that aim to do just that.

CITROËN FINANCIAL SERVICES

PURCHASE PLAN

Own your vehicle with this flexible package designed to fit your budget.

ELECT 3

A new Citroën car every two or three years with monthly payments structured to suit your budget.

ELECT 4

Enjoy the convenience of a new car without the stress and hassle of ownership.

To find out more about Citroën products and services, go to www.citroen.co.uk or contact your Citroën dealer.

FOR BUSINESS USERS

CITROËN CONTRACT MOTORING

HIRE PURCHASE

A tried and tested finance package that allows you to own your vehicle.

BUSINESS LEASE

An alternative to vehicle ownership that allows you to control your business cash flow and gain tax efficiencies.

LEASE PURCHASE

Own a vehicle with a finance solution that offers ultimate flexibility to complement your business cash flow.

CONTRACT HIRE

A non-ownership finance solution that keeps costs fixed and risks low.

For more information on Citroën fleet and business sales, please call Citroën fleet connect on 08457 940 940 or look us up at www.citroen.co.uk/fleet

CITROËN INSURANCE

INSTANT COVER

To help you drive away your new car without delay, we offer Instant Cover insurance, providing you with 7 days comprehensive car insurance, for free!

MOTOR INSURANCE

Citroën Insurance has been designed specifically for our vehicles. You don't just get repairs you get Citroën expertise, service, quality and parts. So, when the time comes to renew your insurance cover, call Citroën Insurance on 0370 024 2725.

Lines open 8am - 8pm weekdays, 9am - 5pm Saturdays. Alternatively, visit www.citroen.co.uk for more information or to apply online.

Citroën Insurance policies are underwritten by U K Insurance Limited, Registered office: The Wharf, Neville Street, Leeds, LS1 4AZ. Registered in England & Wales No. 1179980. U K Insurance Limited is authorised by the Prudential Regulation Authority and regulated by the Financial Conduct Authority and the Prudential Regulation Authority. Citroën Insurance is a trading style of PSA Finance UK (company registration number: 01024322) having its registered office at Quadrant House, Princess Way, Redhill, Surrey, RH1 1QA.

Care for your Citroën Berlingo Multispace and it will look after you – like every Citroën, it's part of a legendary engineering heritage with reliability built in.

With the added reassurance of a warranty, routine servicing and maintenance, as well as 24-hour roadside assistance, you are protected.

CITROËN WARRANTY

Every new Citroën car has the benefit of a 3 year* warranty package, plus a 12 year anti-perforation** warranty and a 3 year paint warranty.

* 2 years' unlimited warranty. No-fee customer option of 1 year's Dealer provided warranty, only on cars sourced from Citroën UK Limited. Note: Dealer provided warranty is limited to 60,000 miles for cars.

** Against all internal to external perforation to bodywork or underbody.

CITROËN ASSISTANCE

In response to a free telephone call in the UK, Citroën Assistance brings rapid expert roadside assistance to you in an emergency. It comes free of charge for a full year and operates 24 hours a day in all parts of the UK and Europe. Services include nationwide recovery for both car and passengers, a home call service, replacement vehicle, hotel accommodation and vehicle storage if required. Please note, Citroën Assistance only applies to incidents covered by the new vehicle warranty, and excludes non-vehicle faults, such as running out of fuel, mis-fuelling, loss of keys, lock-ins, road traffic accidents and punctures/wheel changes.

Full details are available on request from Citroën UK via cuk_contactcentre@citroen.com

CITROËN MAINTENANCE

From roadside assistance to replacing wear and tear parts or regular servicing, with Citroën Maintenance you have total peace of mind. For a one-off fee or low monthly payment, our experienced engineers will take care of your Citroën, whatever happens.

To find out more, contact your Citroën Dealer or Citroën Authorised Repairer.

CITROËN SERVICING

Available up to 1 year from your vehicle's registration date, but before its first chargeable service, a Citroën Servicing Package enables you to pay in advance for your vehicle's servicing needs for 3 years/35,000 miles.

For further information, please contact your Citroën Dealer.

GLOSSARY

› ANTI-LOCK BRAKING SYSTEM (ABS)

Computer-controlled braking assistance designed to prevent the wheels from locking under extreme braking. This enables the car to continue being steered and therefore controlled during this braking incident. Citroën Berlingo Multispace's ABS system is further enhanced with EBA and EBD.

› EMERGENCY BRAKING ASSISTANCE (EBA)

As drivers we find it difficult to instinctively brake very hard, but this is often what is needed in those rare emergency situations. The EBA system recognises our 'attempt' to brake hard and in combination with the ABS and EBD systems instantly applies the maximum stopping power possible.

› ELECTRONIC BRAKEFORCE DISTRIBUTION (EBD)

A conventional ABS system cannot account for any of the four wheels wanting to lock more quickly than the others (for example, two of the wheels may be on snow and two on tarmac). EBD reads the deceleration rate of each wheel individually and applies the braking effort accordingly.

› ELECTRONIC STABILITY CONTROL (ESC)

This is computer-controlled traction assistance and is provided primarily through the braking systems. The ESC's control unit constantly compares where the driver intends to go (through the position of the steering wheel) with where the vehicle is actually going and, if necessary, makes speed corrections to each wheel individually through braking or engine torque to keep the vehicle under control.

› ON-BOARD TRIP COMPUTER

Citroën Berlingo Multispace's multi-function on-board trip computer provides you with information at your fingertips. At the touch of a button you can view a range of data like fuel consumption, average speed and the mileage possible at your current fuel level.

› FRONT SEAT BELT PRE-TENSIONERS

In the event of a crash, a pre-tensioner will tighten the seat belt almost instantaneously. This reduces the load on the occupant in a violent crash. Like airbags, pre-tensioners are triggered by sensors in the car's body, and use explosively expanding gas to drive a piston that retracts the belt. Seat belt pre-tensioners also lower the risk of "submarining", which is when a passenger slides forward under a loosely worn seat belt.

› ISOFIX

A standardised and more simple method for installing child seats, each seat is 'clicked' into place via a three point system. On the Citroën Berlingo Multispace, Isofix is installed on the outer row 2 seats.



PRICES

(Models produced from 1 August 2016)



TRIM	ENGINE	CO ₂ G/KM	V.E.D. 1 ST YEAR RATE	INS. GROUP (1-50)	BASIC R.R.P.	V.A.T.	TOTAL R.R.P.	'ON THE ROAD' R.R.P.*	P11D VALUE	B.I.K. TAX RATE
Touch	VTi 95 manual	148	£145.00	10E	£10,900.00	£2,180.00	£13,080.00	£13,955.00	£13,755.00	26%
Feel	VTi 95 manual	148	£145.00	10E	£11,970.83	£2,394.17	£14,365.00	£15,240.00	£15,040.00	29%
	PureTech 110 S&S manual	119	£0.00	12E	£12,891.67	£2,578.33	£15,470.00	£16,200.00	£16,145.00	23%
	BlueHDi 75 manual	113	£0.00	12E	£12,891.67	£2,578.33	£15,470.00	£16,200.00	£16,145.00	22%
	BlueHDi 100 manual	113	£0.00	14E	£13,391.67	£2,678.33	£16,070.00	£16,800.00	£16,745.00	22%
	BlueHDi 100 manual with Family Pack	113	£0.00	14E	£14,100.00	£2,820.00	£16,920.00	£17,650.00	£17,595.00	22%
	BlueHDi 100 S&S ETG6	109	£0.00	14E	£13,975.00	£2,795.00	£16,770.00	£17,500.00	£17,445.00	21%
Feel Edition	VTi 95 manual	148	£145.00	10E	£12,720.83	£2,544.17	£15,265.00	£16,140.00	£15,940.00	29%
	BlueHDi 100 manual	113	£0.00	15E	£14,154.17	£2,830.83	£16,985.00	£17,715.00	£17,660.00	22%
	BlueHDi 100 S&S manual	109	£0.00	15E	£14,279.17	£2,855.83	£17,135.00	£17,865.00	£17,810.00	21%
	BlueHDi 100 S&S ETG6	109	£0.00	14E	£14,737.50	£2,947.50	£17,685.00	£18,415.00	£18,360.00	21%
XTR	BlueHDi 100 manual	113	£0.00	15E	£14,829.17	£2,965.83	£17,795.00	£18,525.00	£18,470.00	22%
	BlueHDi 100 S&S manual	109	£0.00	15E	£14,954.17	£2,990.83	£17,945.00	£18,675.00	£18,620.00	21%
	BlueHDi 100 S&S ETG6	109	£0.00	15E	£15,412.50	£3,082.50	£18,495.00	£19,225.00	£19,170.00	21%
	BlueHDi 120 S&S 6-speed manual	115	£0.00	17E	£15,495.83	£3,099.17	£18,595.00	£19,325.00	£19,270.00	23%

Insurance groups (1-50) are an indication only, please consult your insurance company for further details.

* The Manufacturer's 'On The Road' Recommended Retail Price includes the following: Delivery to Dealer and Number Plates £562.50, V.A.T. £112.50, Government First Registration Fee £55 and Graduated Vehicle Excise Duty [See www.citroen.co.uk/fleet for details].

CRÉATIVE TECHNOLOGIE

www.citroen.co.uk | CITROËN UK Ltd. Pinley House, 2 Sunbeam Way, Coventry CV3 1ND.

CITROËN prefers **TOTAL**



This brochure is made from paper from a well-managed forest. Citroën support responsible use of forest resources. Please don't throw me away, give me to a friend or recycle me.

NOTE: Images and specification descriptions are dependent on trim level and options specified. Every endeavour has been made to ensure that the information and details contained in this brochure were accurate at the time of going to press August 2016. However the company reserves the right, whilst preserving the essential characteristics of the models described, to introduce at any time modifications, changes of details, equipment or accessories. Every effort will be made to bring this brochure up to date, but in order to avoid any misunderstandings please consult your Dealer. For full details of Citroën Care for Car and Driver, please see the full manufacturer's price list. The Citroën Website contains full information on all Citroën products and offers available in the UK, together with details of our environmental and recycling policies. The site address is: www.citroen.co.uk or you can contact Citroën directly via cuk_contactcentre@citroen.com