

CITROËN RELAY



RELAY





READY FOR ANYTHING. WHATEVER YOU THROW AT IT, CITROËN RELAY IS UP TO THE JOB, AND MORE.

THE AMAZING CHOICE OF SIZES AND PAYLOADS MEANS THAT ALL BASES ARE COMPREHENSIVELY COVERED. BRAND NEW CLEAR GLASS HEADLIGHTS, EDGED IN CHROME AND EQUIPPED WITH DAYTIME RUNNING LIGHTS, ARE POSITIONED HIGH AND SEND A BOLD MESSAGE AT A GLANCE – THIS DEFINITIVE VAN RANGE WITH A PEERLESS HERITAGE HAS MOVED ON.



› CONTENTS: 4 LOAD CHAMPION 6 READY FOR ANYTHING 8 ENTERPRISING SOLUTIONS
9 COLOUR, WHEELS & TRIM 10 RANGE OVERVIEW 12 OPTIONS 13 WEIGHTS & PAYLOADS 14 EQUIPMENT SPECIFICATION
15 TECHNICAL SPECIFICATION 16 DIMENSIONS 18 ENVIRONMENTAL COMMITMENT 19 FINANCE, CARE & INSURANCE



AN EXTENSIVE CHOICE. THE NEW CITROËN RELAY OFFERS AN IMPRESSIVE RANGE OF EQUIPMENT IN OVER 40 CONFIGURATIONS.

CITROËN RELAY HAS A GROSS VEHICLE WEIGHT OF UP TO FOUR TONNES, WITH PAYLOADS OF ALMOST TWO TONNES. THE NEW RELAY IS AVAILABLE IN FOUR LENGTHS, THREE WHEELBASES AND THREE HEIGHTS, ENCOMPASSING USABLE LOAD SPACES FROM 8M³ TO 17M³.

It is available in Panel Van, Enterprise, Chassis Cab and Crew Cab variants. With such a diverse and comprehensive range, Citroën Relay can be tailored to meet the needs of even the most specialist customer. Powering the New Relay are three diesel engines. BlueHDi 110 optimised for low emissions and low fuel consumption, BlueHDi 130 and BlueHDi 160, all with exceptional pulling power. Each model now has ESC as standard and optional Intelligent Traction Control can be fitted, which features Hill Descent Control to retain grip and stability on slippery slopes up to 20mph.





> WELL CONNECTED

Citroën Relay's audio technology has progressed – like everything else. Now there are new levels of functionality and connectivity that include DAB digital radio as standard across the range. On panel vans the Audio System with Connecting Box offers a host of features such as an LCD screen, Bluetooth® handsfree, USB 2.0 socket, Apple device interface and steering-mounted controls. Enterprise panel vans also benefit from a 5 inch colour Touch Screen, MP3 CD player and Bluetooth® handsfree with audio streaming and SMS functions.



> INTERIOR COMFORT

Citroën Relay has been designed to be a true extension of the office: three generous seats (driver's seat with height and lumbar adjustment and dual passenger bench seat), a quiet, well-insulated cabin, and a dashboard with multiple storage areas and clever features. A document clipboard integrated into the top of the dashboard keeps paperwork tidy, while a panel integrated into the back of the front dual passenger seat unfolds to become a work surface. Once you've finished working, your laptop can be stowed safely in the optional, central one of two lockable glove compartments, specially designed to accommodate a laptop computer.



> PNEUMATIC SUSPENSION FOR EASY LOADING

Optional rear pneumatic suspension gives even greater ride comfort. The load sill – already very low even with standard suspension – can be lowered by another 7cm, giving Citroën Relay one of the lowest load heights in its class.





EVERYTHING. AND MORE. INCREDIBLY VERSATILE, SPACIOUS AND COMFORTABLE, CITROËN RELAY IS READY FOR ANY PROFESSIONAL CHALLENGE.

AVAILABLE WITH A HUGE VARIETY OF EQUIPMENT INCLUDING A FULL STEEL BULKHEAD, STANDARD ACROSS THE RANGE, AND REAR PARKING SENSORS STANDARD ON ENTERPRISE MODELS AND OPTIONAL ON PANEL VANS. CITROËN RELAY HARNESSES CITROËN INNOVATIONS, INTELLIGENT DESIGN, DURABLE ENGINEERING AND THOUGHTFUL DETAILS TO CREATE THE COMPLETE WORKING PARTNER. ALWAYS VIGILANT, THE OPTIONAL TYRE PRESSURE SENSORS WARN YOU WHICH WHEEL IS AFFECTED WITH A CLEAR ON-SCREEN MESSAGE, WHILE ALL NEW RELAY ENTERPRISE MODELS GAIN AN ALARM, FOR COMPLETE PEACE OF MIND.



➤ ALL KINDS OF CONTROL

Cruise control with programmable speed limiter makes it easy to maintain or limit speed in all conditions without using the accelerator pedal. The programmed speed can be changed instantly using the left hand stalk, or via the accelerator. Functions of the new system include acceleration and deceleration, vehicle speed memory, stored speed recall and automatic deactivation when the handbrake is engaged. This useful technology is standard on Citroën Relay Enterprise and optional on other versions.





> TELETRAC NAVMAN

Adding to the comfortable experience, Teletrac Navman guides you to your destination without hassle, thanks to real-time traffic and road incident data that provides you with the best possible route and constant updates, via a colour touchscreen. GPS Stolen Vehicle Tracking enables a stolen vehicle to be tracked and located 24/7, every day of the year, so you can leave your vehicle, safe in the knowledge that it can look after itself.

> CONTROL IN FULL COLOUR

Available for the first time in Citroën Relay, the optional colour reversing camera works with rear parking sensors, transmitting bright clear images to the 5 inch colour LCD audio system screen. Engaging automatically when reverse gear is selected, the camera adds useful guide lines to the image you see to make the trickiest manoeuvres much easier – and bump free.

> RELAX, YOU'RE ON COURSE

With its camera mounted above the rear view mirror, the Lane Departure Warning System senses when New Relay drifts across lane markings without indicating and sends you an audible and visual warning. This innovative and reassuring technology activates at speeds above 37mph (60 km/h) and is standard on New Relay 40 Heavy models or an option for all other versions.



COLOURS, WHEELS & TRIM

BODY COLOURS



Polar White



Pacific Blue



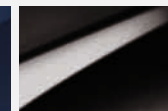
Tiziano Red



Carioca Yellow



Imperial Blue



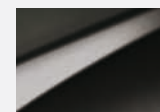
Black



Golden White (M)



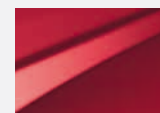
Lake Blue (M)



Graphito Grey (M)

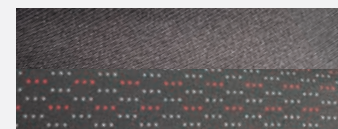


Arctic Steel (M)



Deep Red (P)

TRIM



All versions

'Magnet' trim – dark grey cloth with black and red twill

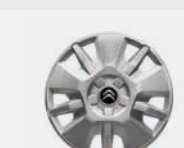
WHEELS

STANDARD STEEL WHEELS
Tyres: 215/70 R15 C¹



30, 33, 35 Panel Vans & Chassis Cabs

15 INCH WHEEL TRIMS
Tyres: 215/70 R15 C¹



30, 33, 35 Panel Vans & Chassis Cabs

15 INCH ALLOY WHEELS
Tyres: 215/70 R15 C¹



30, 33, 35 Panel Vans & Chassis Cabs

STANDARD STEEL WHEELS
Tyres: 225/75 R16 C



35 Heavy & 40 Heavy Panel Vans & Chassis Cabs

16 INCH WHEEL TRIMS
Tyres: 225/75 R16 C



35 Heavy & 40 Heavy Panel Vans & Chassis Cabs

16 INCH ALLOY WHEELS
Tyres: 225/75 R16 C



35 Heavy & 40 Heavy Panel Vans & Chassis Cabs

(P) Pearlescent
(M) Metallic

¹ 225/70 R15 C if pneumatic rear suspension specified.

Please note: Colours and pictures shown are for illustration purposes only. Please consult your Dealer for definitive colour and trim/ upholstery details.

READY FOR ANYTHING. WHATEVER
FORMAT AND EQUIPMENT LEVEL
YOUR WORK DEMANDS, THE CITROËN
RELAY RANGE WILL DELIVER A TOUGH
PROFESSIONAL PARTNER.

EVERY MODEL IN THE CITROËN RELAY RANGE HAS A SUPERB SPECIFICATION, UNMISTAKABLE INTERIOR
COMFORT AND HUGE LOAD VOLUMES AND PAYLOADS. IT'S TIME TO CHOOSE THE PERFECT FIT FOR
YOUR BUSINESS...



› CITROËN RELAY **PANEL VAN** SPECIFICATION INCLUDES:

- ABS
- Electronic Stability Control (ESC)
- Emergency Braking Assistance
- Immobiliser
- **Teletrac Navman** – 3 years' Navman Touchscreen routes, up to 100 routes per month, 3 years' Trackstar Stolen Vehicle Tracking, 3 years' automatically downloaded live traffic information, 10 Personal Assistant Smartnav routes and 3 months' Safe Speed safety camera alerts
- Driver's airbag
- High frequency remote control central locking with plip
- Rear doors opening to 180°
- Nearside sliding side loading door

- Steel wheels
- Electric front windows
- Tinted windows
- Laminated windscreen
- Heated twin lens door mirrors with electric adjustment for passenger side
- Full steel bulkhead
- Mid-height interior protection in load compartment
- Driver's seat height adjustment
- Height adjustable steering wheel
- Audio System with Connecting Box – DAB digital radio with steering mounted controls, Bluetooth® system and USB socket
- Steering wheel mounted controls

› CITROËN RELAY **ENTERPRISE** SPECIFICATION IN ADDITION TO PANEL VAN INCLUDES:

- Air conditioning
- Cruise control with programmable speed limiter
- **Touch Screen Audio Pack** – DAB digital radio and MP3 CD player with steering mounted controls, 5 inch colour touch screen, Bluetooth® handsfree and USB socket
- Rear parking sensors*
- Perimetric alarm

	PANEL VAN	ENTERPRISE	CHASSIS CAB	CHASSIS CREW CAB	BACK TO BACK
ENGINE AVAILABILITY					
30 L1H1 BlueHDi 110 6-speed manual	•	•			
30 L1H1 BlueHDi 130 S&S 6-speed manual	•				
33 L1H1 BlueHDi 110 6-speed manual	•	•			
33 L1H1 BlueHDi 130 6-speed manual	•	•			
35 L2H1 BlueHDi 130 6-speed manual	•	•			
33 L2H2 BlueHDi 110 6-speed manual	•	•			
33 L2H2 BlueHDi 130 6-speed manual	•	•			
35 L2H2 BlueHDi 130 6-speed manual	•	•			
40 Heavy L2H2 BlueHDi 130 6-speed manual	•				
33 L3H2 BlueHDi 130 6-speed manual	•				
35 L3H2 BlueHDi 130 6-speed manual	•	•			
35 L3H2 BlueHDi 130 S&S 6-speed manual	•				
35 L3H2 BlueHDi 160 6-speed manual	•	•			

	PANEL VAN	ENTERPRISE	CHASSIS CAB	CHASSIS CREW CAB	BACK TO BACK
ENGINE AVAILABILITY					
35 Heavy L3H2 BlueHDi 130 6-speed manual	•	•			
35 L3H3 BlueHDi 130 6-speed manual	•	•			
35 Heavy L4H2 BlueHDi 130 6-speed manual	•	•			
40 Heavy L4H2 BlueHDi 130 6-speed manual	•	•			
35 Heavy L4H3 BlueHDi 130 6-speed manual	•	•			
35 L2 BlueHDi 110 6-speed manual			•		
35 L2 BlueHDi 130 6-speed manual			•		
35 L3 BlueHDi 130 6-speed manual			•		
35 Heavy L3 BlueHDi 160 6-speed manual			•		
35 Heavy L4 BlueHDi 160 6-speed manual			•		
40 Heavy L3 BlueHDi 130 6-speed manual			•		
35 L3 BlueHDi 130 6-speed manual				•	
35 BlueHDi 130 6-speed manual					•

* Enterprise panel van versions only.

CITROËN RELAY IS ALSO AVAILABLE AS A CHASSIS CAB, CHASSIS CREW CAB OR A BACK TO BACK MODEL DESIGNED TO BE ADAPTABLE FOR MANY DIFFERENT KINDS OF SPECIALIST CONVERSION. TO EXTEND THE CITROËN RELAY RANGE FURTHER OUR SPECIALIST MODELS INCLUDE A STANDARD TIPPER, DROPSIDE OR A LUTON VAN. BUILT TO THE SAME HIGH STANDARD AS ANY OF OUR PANEL VANS, THESE MODELS OFFER NEAR ENDLESS POSSIBILITIES TO HELP YOU FIND YOUR FIT-FOR-PURPOSE, PERFECT MODEL. FOR FURTHER INFORMATION ON OUR SPECIALIST MODELS, PLEASE SEE OUR READY TO RUN BROCHURE.



OPTIONS

- Standard
- ◆ No cost option
- Option available on special order

- 1 Alloy wheels and wheel trims are incompatible.
- 2 Not available on Heavy versions.
- 3 Available on Heavy versions only.
- 4 Not available on L4 Heavy versions.
- 5 Available on L4 Heavy versions only.
- 6 Standard on 40 Heavy versions.
- 7 Tachograph deletes radio, so must be ordered with pre-wiring for radio including four loudspeakers (RC29). This is already present on 40 Heavy chassis cab, as this version is equipped with tachograph as standard.
- 8 Available as a special order on 40 Heavy versions only, for conversions which do not legally require a tachograph or speed limiter.
- 9 Puncture repair kit is incompatible with snow tyres. Deletes spare wheel.
- 10 Present when optional rear adjustable pneumatic suspension is ordered.
- 11 Incompatible with intelligent traction control.
- 12 Present when optional intelligent traction control is ordered.
- 13 Incompatible with puncture repair kit.
- 14 Incompatible with rear adjustable pneumatic suspension.
- 15 Present when optional heat-reflecting windscreen is ordered.
- 16 Includes front fog lights.
- 17 Incompatible with passenger bench seat.
- 18 Included when optional front passengers', lateral and curtain airbags are ordered.
- 19 Not available on H3 versions.
- 20 Present when optional headlight washers are ordered.
- 21 Mobile phone compatibility can vary by phone manufacturer. Please consult your Dealer for further phone compatibility information.
- 22 Not available on 40 Heavy versions.
- 23 For minibus (Public Service Vehicle) conversions only.
- 24 Optional on 40 Heavy versions only.
- 25 Incompatible with delete tachograph option.
- 26 Not available on BlueHDi 110 versions.
- 27 Standard on 40 Heavy except if rear adjustable pneumatic suspension is ordered.
- 28 Includes uprated tyres 225/70 on 30, 33 and 35 versions excluding 35 Heavy or 40 Heavy versions. Incompatible with Michelin 215/70 tyres, rear reinforced twin-leaf suspension and rear heavy duty reinforced twin-leaf suspension.
- 29 Enerprise panel van versions only.
- 30 In addition to rear parking sensors.
- 31 Includes All Season tyres. Incompatible with Uprated 15 inch tyres (225/70) and with 15 and 16 inch Michelin Agilis tyres.
- 32 Includes automatic windscreen wipers.
- 33 Incompatible with optional front passengers' airbag and with front passengers', lateral and curtain airbags.
- 34 Production of Black paint and special order paint will increase lead times, dependent on the exact colour required. Please check with your dealer for further information.
- 35 Incompatible with optional front passengers', lateral and curtain airbags.

	PANEL VAN	ENTERPRISE	CHASSIS CAB	CHASSIS CREW CAB	BACK TO BACK CAB
OPTION SUMMARY					
Cigar lighter	○	○	○	○	○
Uprated battery	○	○	○	○	○
15 inch alloy wheels	○ ^{1/2}	○ ^{1/2}	○ ^{1/2}	○ ¹	○
16 inch alloy wheels	○ ^{1/3}	○ ^{1/3}	○ ^{1/3}	○	○
LED daytime running lights	○ ⁴	○ ⁴	○	○	○
LED daytime running lights with side markers	○ ⁵	○ ⁵	○	○	○
Under body protection plate	○	○	○	○	○
Tachograph	○ ⁶	○ ⁶	○ ^{6/7}	○ ⁷	○ ⁷
Delete tachograph	◆ ⁸	◆ ⁸	◆ ⁸	○	○
Electrically folding, heated door mirrors	○	○	○	○	○
Conversion interface box	○	○	●	●	●
Lane Departure Warning System	○ ⁶	○ ⁶	○ ⁶	○	○
270° opening rear doors	○	○	○	○	○
Puncture repair kit (instead of spare wheel)	◆ ⁹	◆ ⁹	◆ ⁹	◆ ⁹	◆
Uprated 15 inch tyres (225/70)	○ ^{2/10/11}	○ ^{2/10/11}	○ ^{2/10/11}	○ ^{10/11}	○
15 inch All Season tyres (225/70)	○ ^{2/12}	○ ^{2/12}	○ ^{2/12}	○ ¹²	○
16 inch All Season tyres (225/75)	○ ^{3/12}	○ ^{3/12}	○ ^{3/12}	○	○
15 inch Winter tyres (225/70 R15C 112/110R)	○ ^{2/13}	○ ^{2/13}	○ ^{2/13}	○ ¹³	○
16 inch Winter tyres (225/75 R16C 116/114R)	○ ^{3/13}	○ ^{3/13}	○ ^{3/13}	○	○
15 inch Michelin Agilis tyres (215/70)	○ ^{2/11/14}	○ ^{2/11/14}	○ ^{2/11/14}	○ ^{11/14}	○
16 inch Michelin Agilis tyres (225/75)	○ ^{3/11}	○ ^{3/11}	○ ^{3/11}	○	○
Automatic lights and windscreen wipers	○ ¹⁵	○ ¹⁵	○ ¹⁵	○ ¹⁵	○ ¹⁵
Headlight washers	○ ¹⁶	○ ¹⁶	○ ¹⁶	○ ¹⁶	○ ¹⁶
Front passengers', lateral and curtain airbags	○ ¹⁷	○ ¹⁷	○ ¹⁷	○	○ ¹⁷
Front passenger's airbag	○ ¹⁸	○ ¹⁸	○ ¹⁸	○	○ ¹⁸
Offside sliding side loading door	○ ¹⁹	○ ¹⁹	○	○	○
Fog lights	○ ²⁰	○ ²⁰	○ ²⁰	○ ²⁰	○ ²⁰
Ladder frame bulkhead	◆	◆	○	○	○
Full steel bulkhead with window	○	○	○	○	○
Pre-wiring for radio including 4 loudspeakers	○	○	○ ^{6/7}	○ ⁷	○ ⁷
Touch Screen Audio Pack – DAB digital radio and MP3-compatible CD player with steering mounted controls, 5 inch colour touch screen, Bluetooth® handsfree and USB socket	○ ²¹	● ²¹	○ ²¹	○ ²¹	○ ²¹
Air conditioning	○	●	○	○	○
Automatic air conditioning	○	○	○	○	○
Automatic air conditioning (in addition to standard air conditioning)	○	○	○	○	○
Cruise control with programmable speed limiter	○ ²²	● ²²	○ ²²	○	○
62mph fixed speed limiter	○ ²³	○	○	○	○
Cruise control with 56mph fixed speed limiter	○ ^{24/25}	○	○ ^{24/25}	○	○

	PANEL VAN	ENTERPRISE	CHASSIS CAB	CHASSIS CREW CAB	BACK TO BACK CAB
OPTION SUMMARY					
Cruise control with 56mph fixed speed limiter	○	○ ^{24/25}	○	○	○
Cruise control with 62mph fixed speed limiter	○ ^{23/26}	○ ^{23/26}	○	○	○
Extended rear view mirrors (2.35m max. conversion width)	○	○	○	○	○
Rear reinforced twin-leaf suspension	○ ^{14/27}	○ ^{14/27}	○	○	○
Rear heavy duty reinforced twin-leaf suspension	○	○	○ ¹⁴	○ ¹⁴	○
Wheel trims	○ ¹	○ ¹	○ ¹	○ ¹	○
Full-height load compartment protection	○ ¹⁹	○ ¹⁹	○	○	○
Rear adjustable pneumatic suspension	○ ²⁸	○ ²⁸	○ ²⁸	○ ²⁸	○
Rear parking sensors	○	● ²⁹	○	○	○
Rear parking sensors and reversing camera with Touch Screen Audio Pack	○	○	○	○	○
Reversing camera	○	○ ³⁰	○	○	○
Tyre pressure sensors	○	○	○	○	○
Intelligent traction control	○ ³¹	○ ³¹	○ ³¹	○ ³¹	○
Glazed rear doors and heated rear windows	○	○	○	○	○
Heat-reflecting windscreen	○ ³²	○ ³²	○ ³²	○ ³²	○ ³²
Leather steering wheel and gear knob	○	○	○	○	○
Perimetric alarm	○	●	○	○	○
Single passenger seat with armrest and lumbar adjustment	◆ ¹⁸	◆ ¹⁸	◆ ¹⁸	◆	◆ ¹⁸
Single passenger seat with armrest, lumbar and height adjustment	◆	◆	◆	◆	◆
Pivoting driver and single passenger seats with full, upholstered head restraints	○	○	○	○	○
Lower central glovebox	●	○ ³³	●	●	●
Metallic/Pearlescent paint	○	○	○	○	○
Black paint	○ ³⁴	○ ³⁴	○ ³⁴	○ ³⁴	○ ³⁴
Special order paint	○ ³⁴	○ ³⁴	○ ³⁴	○ ³⁴	○ ³⁴
Look Pack – LED Daytime running lights, front fog lights, wheel trims	○	○	○	○	○
City Pack – Rear parking sensors, reversing camera and electrically folding, heated door mirrors with Touch Screen Audio Pack	○	○	○	○	○
City Pack – Reversing camera and electrically folding, heated door mirrors	○	○	○	○	○
Comfort Pack – Automatic windscreen wipers, automatic air conditioning, suspended driver's seat and leather steering wheel	○ ³⁵	○ ³⁵	○	○	○
Comfort Pack – Automatic windscreen wipers, automatic air conditioning, suspended driver's seat and leather steering wheel	○	○ ³⁵	○	○	○
All-Road Pack – Intelligent traction control and under body protection plate	○ ³¹	○ ³¹	○ ³¹	○ ³¹	○
Safety Pack – Lane Departure Warning System, passenger airbag and tyre pressure sensors	○ ²²	○ ²²	○ ²²	○	○

WEIGHTS & PAYLOADS

	GROSS VEHICLE WEIGHT (GVW)	PAYLOAD WEIGHT*	KERB WEIGHT	MASS IN SERVICE	MAX BRAKED TOWING WEIGHT	GROSS TRAIN WEIGHT (GTW)	MAX FRONT AXLE	MAX REAR AXLE
PANEL VAN								
30 L1H1 BlueHDi 110 6-speed manual	3000	1155	1845	2024	2000	5000	1630	1650
30 L1H1 BlueHDi 130 S&S 6-speed manual	3000	1140	1860	2039	2500	5500	1630	1650
33 L1H1 BlueHDi 110 6-speed manual	3300	1455	1845	2024	2000	5300	1750	1900
33 L1H1 BlueHDi 130 6-speed manual	3300	1440	1860	2039	2500	5800	1750	1900
35 L2H1 BlueHDi 130 6-speed manual	3500	1600	1900	2079	2500	6000	1850	2000
33 L2H2 BlueHDi 110 6-speed manual	3300	1390	1910	2089	2000	5300	1750	1900
33 L2H2 BlueHDi 130 6-speed manual	3300	1375	1925	2104	2500	5800	1750	1900
35 L2H2 BlueHDi 130 6-speed manual	3500	1575	1925	2104	2500	6000	1850	2000
40 Heavy L2H2 BlueHDi 130 6-speed manual	4005	1995	2010	2189	2500	6505	2100	2400
33 L3H2 BlueHDi 130 6-speed manual	3300	1325	1975	2154	2500	5800	1750	1900
35 L3H2 BlueHDi 130 6-speed manual	3500	1525	1975	2154	2500	6000	1850	2000
35 L3H2 BlueHDi 130 S&S 6-speed manual	3500	1525	1975	2154	2500	6000	1850	2000
35 L3H2 BlueHDi 160 6-speed manual	3500	1525	1975	2154	2500	6000	1850	2000
35 Heavy L3H2 BlueHDi 130 6-speed manual	3500	1485	2015	2154	3000	6500	2100	2400
35 L3H3 BlueHDi 130 6-speed manual	3500	1500	2000	2192	2500	6000	1850	2000
35 Heavy L4H2 BlueHDi 130 6-speed manual	3500	1440	2060	2239	3000	6500	2100	2400
40 Heavy L4H2 BlueHDi 130 6-speed manual	4005	1900	2105	2284	2500	6505	2100	2400
35 Heavy L4H3 BlueHDi 130 6-speed manual	3500	1410	2090	2269	3000	6500	2100	2400
ENTERPRISE								
30 L1H1 BlueHDi 110 6-speed manual	3000	1155	1845	2024	2000	5000	1630	1650
33 L1H1 BlueHDi 110 6-speed manual	3300	1455	1845	2024	2000	5300	1750	1900
33 L1H1 BlueHDi 130 6-speed manual	3300	1440	1860	2039	2500	5800	1750	1900
35 L2H1 BlueHDi 130 6-speed manual	3500	1600	1900	2079	2500	6000	1850	2000
33 L2H2 BlueHDi 110 6-speed manual	3300	1390	1910	2089	2000	5300	1750	1900
33 L2H2 BlueHDi 130 6-speed manual	3300	1375	1925	2104	2500	5800	1750	1900
35 L2H2 BlueHDi 130 6-speed manual	3500	1575	1925	2104	2500	6000	1850	2000
35 L3H2 BlueHDi 130 6-speed manual	3500	1525	1975	2154	2500	6000	1850	2000
35 L3H2 BlueHDi 160 6-speed manual	3500	1525	1975	2154	2500	6000	1850	2000
35 Heavy L3H2 BlueHDi 130 6-speed manual	3500	1485	2015	2194	3000	6500	2100	2400
35 L3H3 BlueHDi 130 6-speed manual	3500	1500	2000	2179	2500	6000	1850	2000
35 Heavy L4H2 BlueHDi 130 6-speed manual	3500	1440	2060	2239	3000	6500	2100	2400
40 Heavy L4H2 BlueHDi 130 6-speed manual	4005	1900	2105	2284	2500	6505	2100	2400
35 Heavy L4H3 BlueHDi 130 6-speed manual	3500	1410	2090	2269	3000	6500	2100	2400

	GROSS VEHICLE WEIGHT (GVW)	PAYLOAD WEIGHT*	KERB WEIGHT	MASS IN SERVICE	MAX BRAKED TOWING WEIGHT	GROSS TRAIN WEIGHT (GTW)	MAX FRONT AXLE	MAX REAR AXLE
CHASSIS CAB								
35 L2 BlueHDi 110 6-speed manual	3500	1880	1620		2000	5500	1850	2000
35 L2 BlueHDi 130 6-speed manual	3500	1865	1635		2500	6000	1850	2000
35 L3 BlueHDi 130 6-speed manual	3500	1845	1655		2500	6000	1850	2000
35 Heavy L3 BlueHDi 160 6-speed manual	3500	1805	1695		3000	6500	2100	2400
35 Heavy L4 BlueHDi 160 6-speed manual	3500	1790	1710		3000	6500	2100	2400
40 Heavy L3 BlueHDi 130 6-speed manual	4005	2310	1695		2500	6505	2100	2400
CHASSIS CREW CAB								
35 L3 BlueHDi 130 6-speed manual	3500	1620	1880		2500	6000	1850	2000
BACK TO BACK CAB								
35 BlueHDi 130 6-speed manual	3500				2500	6000	1850	2000



Up to 1995kg
payload on Panel Vans



* Includes driver.

EQUIPMENT SPECIFICATION

- Standard equipment
- Optional factory fitted equipment

1 Standard on 40 Heavy versions, optional on all other versions.

2 The operator of the vehicle must have the tachograph calibrated and sealed by an Approved Tachograph Centre, and then checked every two years.

3 Incompatible with pivoting front seats with full upholstered head restraints.

4 Not available on 40 Heavy versions.

5 Standard on 40 Heavy versions only.

6 Standard on 40 Heavy, only when optional delete tachograph is ordered.

7 Standard on 40 Heavy, only if optional rear adjustable pneumatic suspension is ordered.

8 Standard on 40 Heavy only, except if optional rear adjustable pneumatic suspension is ordered instead. Optional on Chassis Crew Cab.

9 Enerprise panel van versions only.

10 Mobile phone compatibility can vary by phone manufacturer. Please consult your Dealer for further compatibility information.

	PANEL VAN	ENTERPRISE	CHASSIS/CREW CAB	BACK TO BACK CAB
SAFETY & SECURITY				
ABS	●	●	●	●
Immobiliser	●	●	●	●
Speedometer in mph	●	●	●	●
High frequency remote control central locking with plip	●	●	●	●
Tachograph	● ^{1/2}	● ^{1/2}	● ^{1/2}	
Lane Departure Warning System	● ¹	● ¹	● ¹	○
Full steel bulkhead	● ³	● ³		
Cruise control with programmable speed limiter	○ ⁴	●		
Speed Limiter (56 mph)	● ⁵	● ⁵	● ⁵	
Driver's airbag	●	●	●	●
Electronic Stability Control (ESC)	●	●	●	
Emergency Braking Assistance	●	●	●	●
Laminated windscreen	●	●	●	●
Rear parking sensors	○	●		
Deadlocks	●	●	●	●
Perimetric alarm	○	●		
Mid-height interior protection in load compartment	●	●		
LIGHTING & VISIBILITY				
2 speed, intermittent front windscreen wipers (non-automatic)	●	●	●	●
Standard width door mirrors	●	●		
Heated twin lens door mirrors with electric adjustment for passenger side	●	●	●	●
Extended rear view mirrors (2.20m)			●	●
STYLE				
Unglazed rear doors	●	●		
Nearside sliding side loading door	●	●		
Steel wheels	●	●	●	●
Painted grille			●	●
Chrome grille	●	●		
Tinted windows	●	●	●	●
Black front bumper	●	●	●	●

	PANEL VAN	ENTERPRISE	CHASSIS/CREW CAB	BACK TO BACK CAB
COMFORT & CONVENIENCE				
Electric front windows	●	●	●	●
12 volt socket in cabin	●	●	●	●
Full size steel spare wheel	●	●	●	●
Variable assisted power steering	●	●	●	●
Steering wheel mounted audio controls	●	●	●	●
Reach adjustable steering wheel	●	●	●	●
Rear doors opening to 180°	●	●		
90 litre fuel tank	●	●	●	●
15 litre AdBlue® tank	●	●	●	●
Air conditioning	○	●		
Without fixed speed limiter	● ⁶	● ⁶	● ⁶	●
Rear single-leaf suspension	● ⁷	● ⁷	● ⁷	●
Rear reinforced twin-leaf suspension	● ⁹		● ⁸	
Metallic suspension	●	●	●	●
12 volt socket in rear	●	●		
Teletrac Navman – 3 years' Navman Touchscreen routes, up to 100 routes per month, 3 years' Trackstar Stolen Vehicle Tracking, 3 years' automatically downloaded live traffic information, 10 Personal Assistant Smartnav routes and 3 months' Safe Speed safety camera alerts	●	●		
STORAGE				
Lockable, non-illuminated glove box	●		●	●
Smartphone storage and two inbuilt cup holders		● ⁹		
Overhead storage shelf	●	●	●	●
SEATING				
Driver's seat height and lumbar adjustment	●	●	●	●
Passenger bench seat	●	●	●	●
AUDIO/NAVIGATION				
Conversion interface box	○	○	●	●
Audio System with Connecting Box: DAB digital radio with steering mounted controls, Bluetooth® system and USB socket	●		● ¹⁰	● ¹⁰
Touch Screen Audio Pack – DAB digital radio and MP3 CD player with steering mounted controls, 5 inch colour touch screen, Bluetooth® handsfree and USB socket	○ ¹⁰	● ¹⁰		

TECHNICAL SPECIFICATION

DIESEL MODELS				
	BlueHDi 110 6-speed manual	BlueHDi 130 6-speed manual	BlueHDi 130 S&S 6-speed manual	BlueHDi 160 6-speed manual
ENGINE				
Capacity (cc)	1997	1997	1997	1997
Cylinders	4	4	4	4
Bore and stroke (mm)	85 x 88	85 x 88	85 x 88	85 x 88
Max power CEE (kW/rpm)	81/3750	96/3750	96/3750	120/3750
Max torque CEE (Nm/rpm)	304/1500	350/1750	350/1750	350/1750
Fuel system	High pressure direct diesel injection	High pressure direct diesel injection	High pressure direct diesel injection	High pressure direct diesel injection
Euro status	Euro 6	Euro 6	Euro 6	Euro 6
TRANSMISSION				
Six speed manual	•	•	•	•
Six speed Stop & Start manual				
ECONOMY Litres/100km (mpg)				
Combined Min/Max	6.0/6.6 (47.1/42.8)	6.0/6.6 (47.1/42.8)	5.8/6.0 (48.7/47.1)	6.2/6.6 (45.6/42.8)
CO₂ EMISSIONS (g/km) Min/Max				
	158/173	158/173	154/159	163/173
BRAKES				
Front brakes/Rear brakes	ABS with Emergency Braking Assistance (EBA) Ventilated discs/discs			
STEERING				
	Variable power assisted steering			
Number of turns lock to lock	3.87	3.87	3.87	3.87
Turning circle between kerbs/walls (m) L1	11.26/11.44	11.26/11.44	11.26/11.44	
Turning circle between kerbs/walls (m) L2	12.64/12.84	12.64/12.84		
Turning circle between kerbs/walls (m) L3 & L4		14.24/14.46	14.24/14.46	14.24/14.46
SUSPENSION				
Front	Independent MacPherson type struts with triangulated lower suspension arms, coil springs with integral telescopic hydraulic dampers			
Rear	Longitudinal leaf springs with inclined telescopic hydraulic dampers			
Rear pneumatic	Pneumatic springs at a constant height; adjustable when vehicle is stationary			
FUEL TANK CAPACITY Litres (gallons)				
	90 (19.8)			

MPG figures are achieved under official EU test conditions, intended as a guide for comparative purposes only, and may not reflect actual on-the-road driving conditions.

DIMENSIONS



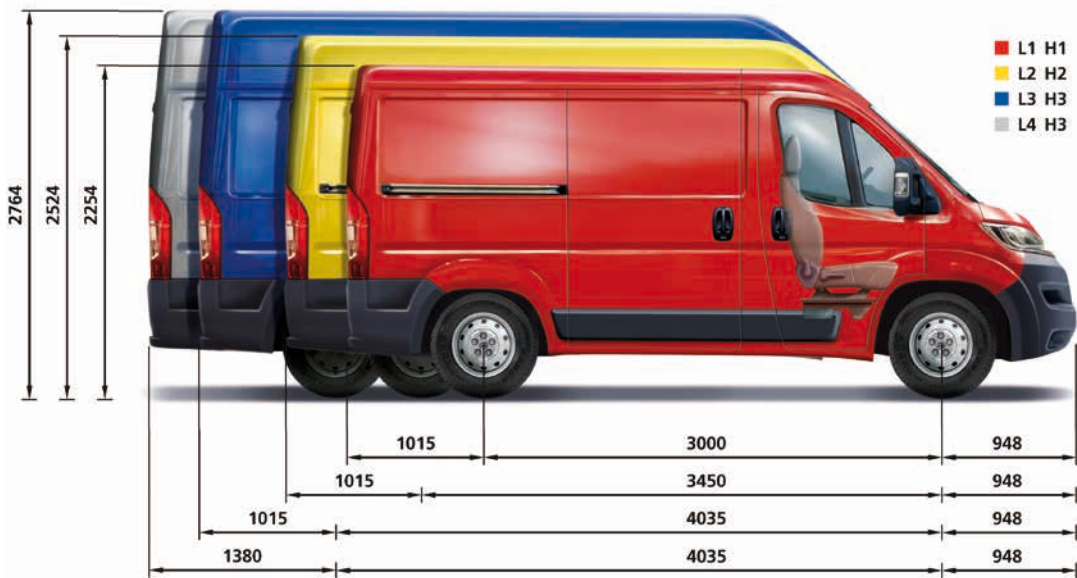
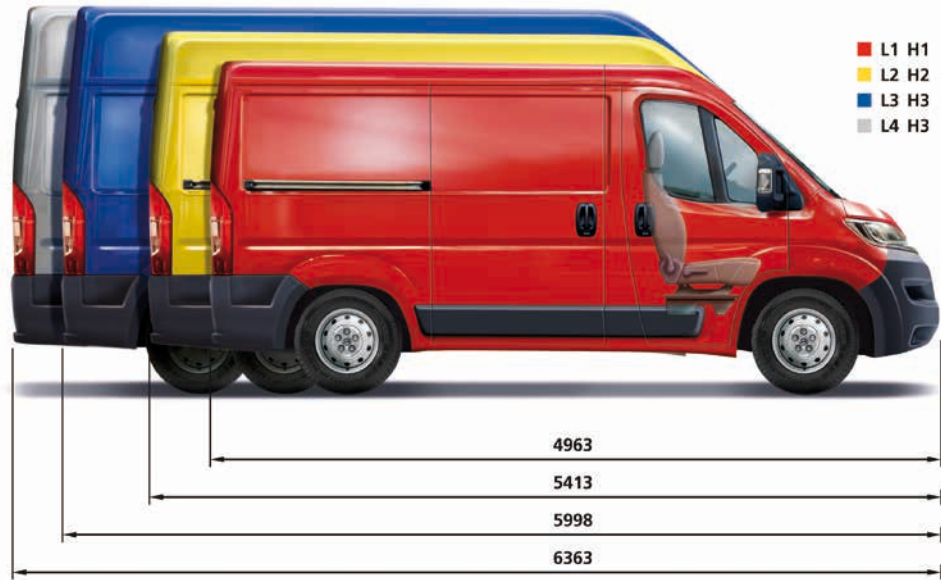
Up to 17m³
of load space

	PANEL VANS/ENTERPRISE							CHASSIS CAB/ CREW CAB			BACK TO BACK CAB
	L1	L2		L3		L4		L2	L3	L4	
	H1	H1	H2	H2	H3	H2	H3				
EXTERIOR DIMENSIONS (mm)											
Length	4963	5413	5413	5998	5998	6363	6363	5258	5843	6208	
Length of frame to back of Chassis Cab								2920	3505	3870	
Length of frame to back of Crew Cab									2634		
Height	2254	2254	2524	2524	2764	2524	2764				
Height of cab								2153	2153	2153	2153
Width – excluding door mirrors	2050	2050	2050	2050	2050	2050	2050	2050	2050	2050	2050
Width – with door mirrors unfolded	2508	2508	2508	2508	2508	2508	2508				
Width – with extra wide door mirrors unfolded (max. converted vehicle width 2200mm)								2690	2690	2690	2690
Width – with extra wide door mirrors unfolded (max. converted vehicle width 2350mm)								2770	2770	2770	2770
Wheelbase	3000	3450	3450	4035	4035	4035	4035	3450	4035	4035	
Front overhang	948	948	948	948	948	948	948	948	948	948	948
Rear overhang	1015	1015	1015	1015	1015	1380	1380	860	860	1225	
Front track	1810	1810	1810	1810	1810	1810	1810	1810	1810	1810	1810
Rear track	1790	1790	1790	1790	1790	1790	1790	1790	1790	1790	
LOAD COMPARTMENT DIMENSIONS											
Load sill height – according to vehicle length and tyre size (mm)	507-509	503-506	494-558	504-556	505-555	594-601	555-561				
Load length at floor (mm)	2670	3120	3120	3705	3705	4070	4070				
Load length at mid-height, with bulkhead (mm)	2464	2914	2914	3555	3555	3920	3920				
Maximum load compartment height (mm)	1662	1662	1932	1932	2172	1932	2172				
Maximum load width between sides (mm)	1870	1870	1870	1870	1870	1870	1870				
Maximum load width between wheel arches (mm)	1422	1422	1422	1422	1422	1422	1422				
Sliding side door height (mm)	1485	1485	1755	1755	1755	1755	1755				
Sliding side door width (mm)	1075	1250	1250	1250	1250	1250	1250				
Rear door height (mm)	1520	1520	1790	1790	2030	1790	2030				
Rear door width (mm)	1562	1562	1562	1562	1562	1562	1562				
Degree to which doors open	180	180	180	180	180	180	180				
Load compartment volume (m ³)	8	10	11.5	13	15	15	17				
CONVERTIBLE AREA DIMENSIONS (mm)											
Maximum length once converted [^]								7383	7383	7383	
Maximum overhang once converted (excl. Motorhomes) [^]								2070	2400	2400	
Maximum overhang once converted (Motorhomes only) [^]								2243	2400	2400	
Maximum height once converted [^]								2254/ 3500 [^]	3500	3500	3500
Maximum width of conversion (excl. Motorhomes) [^]								2200 (2350) [*]	2200 (2350) [*]	2200 (2350) [*]	2200 (2350) [*]
Maximum width of conversion (Motorhomes only) [^]								2430	2430	2430	2430

[^] Maximum allowable measurement after conversion. Exact value varies depending on specification of completed vehicle.

[^] 2254 with BlueHDi 110 engine; 3500 with BlueHDi 130 engine.

^{*} 2200 with extra wide door mirrors (fitted as standard); 2350 with optional, wider door mirrors.



All measurements are in millimetres.

GREEN EFFICIENCY. CITROËN HAS BEEN PIONEERING CLEANER, MORE FUEL-EFFICIENT MOTORING, SUCH AS THE COMMON RAIL HDi ENGINES NOW FITTED IN ALL NEW CITROËN DIESELS, LONG BEFORE ALL THE HYPE...

CITROËN HAS ALWAYS BEEN AT THE FOREFRONT OF GREENER TECHNOLOGY AND CITROËN RELAY MAINTAINS THAT TRADITION. IT'S WHY WE ARE FOUR TIME WINNERS OF THE GREEN FLEET LCV MANUFACTURER OF THE YEAR. TODAY, WE HAVE ONE OF THE UK'S WIDEST RANGES OF LOW EMISSION VEHICLES. CITROËN NEMO VAN IS ONE OF THE UK'S MOST ECONOMICAL LIGHT COMMERCIAL VEHICLES.

We've been equipping more of our vehicles with more environmentally friendly breakthroughs, such as Stop & Start. This puts the engine into idle mode as you decelerate and stops altogether as you come to a halt. The moment you take your foot off the brake, it restarts silently and without vibration. The results are a dramatic reduction in both fuel consumption and CO₂ emissions, combined with responsive performance wherever you go.



GO LO CO₂ WITH B30

All Citroën BlueHDi diesel vans run on 30% bio-diesel



▶ THE AWARD WINNING CITROËN VAN RANGE

Citroën has an impressive range of vans to offer, full of innovations and technologies that raise the bar for comfort, safety, hard working efficiency and style. Our four model van range goes from the fabulously compact Citroën Nemo to the hugely versatile Citroën Relay and includes a number of Ready to Run models. Whichever you go for you'll get plenty of ingenious storage and business focused equipment, all designed to make your work easier and extra efficient.

DRIVE YOUR WAY. GET BEHIND THE WHEEL OF YOUR NEW CITROËN RELAY, WITH CITROËN'S RANGE OF FINANCE AND INSURANCE PRODUCTS.

ESSENTIAL CARE. CITROËNS ARE RENOWNED FOR THEIR RELIABILITY – AND CITROËN RELAY IS NO EXCEPTION.

WITH THE ADDED REASSURANCE OF A WARRANTY, ROUTINE SERVICING AND MAINTENANCE, AS WELL AS 24-HOUR ROADSIDE ASSISTANCE, YOU ARE PROTECTED.

FOR BUSINESS USERS

FREE2MOVE

HIRE PURCHASE

A tried and tested finance package that allows you to own your vehicle.

BUSINESS LEASE

An alternative to vehicle ownership that allows you to control your business cash flow and gain tax efficiencies.

LEASE PURCHASE

Own a vehicle with a finance solution that offers ultimate flexibility to complement your business cash flow.

CONTRACT HIRE

A non-ownership finance solution that keeps costs fixed and risks low.

For more information on Citroën fleet and business sales, please call Citroën fleet connect on 0800 023 4000 or look us up at <http://business.citroen.co.uk>

CITROËN INSURANCE

INSTANT COVER

To help you drive away your new van without delay, we offer Instant Cover insurance, providing you with 7 days comprehensive insurance, for free!

MOTOR INSURANCE

Citroën Insurance has been designed specifically for our vehicles. You don't just get repairs you get Citroën expertise, service, quality and parts. So, when the time comes to renew your insurance cover, call Citroën Insurance on 0370 024 2725.

Lines open 8am - 8pm weekdays, 9am - 5pm Saturdays. Alternatively, visit www.citroen.co.uk for more information or to apply online.

Citroën Insurance policies are underwritten by U K Insurance Limited, Registered office: The Wharf, Neville Street, Leeds, LS1 4AZ. Registered in England & Wales No. 1179980. U K Insurance Limited is authorised by the Prudential Regulation Authority and regulated by the Financial Conduct Authority and the Prudential Regulation Authority. Citroën Insurance is a trading style of PSA Finance UK (company registration number: 01024322) having its registered office at Quadrant House, Princess Way, Redhill, Surrey, RH1 1QA.

CITROËN WARRANTY

Every new Citroën van has the benefit of a 3 year* warranty package, plus a 5 year anti-perforation** warranty and a 2 year paint warranty.

* 2 years' unlimited warranty. No-fee customer option of 1 year's Dealer provided warranty, only on vans sourced from Citroën UK Limited.

Note: Dealer provided warranty is limited to 100,000 miles for vans, motorhomes and converted vehicles.

** Against all internal to external perforation to bodywork or underbody.

CITROËN ASSISTANCE

In response to a free telephone call in the UK, Citroën Assistance brings rapid expert roadside assistance to you in an emergency. It comes free of charge for a full year and operates 24 hours a day in all parts of the UK and Europe. Services include nationwide recovery for both van and passengers, a home call service, replacement vehicle, hotel accommodation and vehicle storage if required. Please note, Citroën Assistance only applies to incidents covered by the new vehicle warranty, and excludes non-vehicle faults, such as running out of fuel, mis-fuelling, loss of keys, lock-ins, road traffic accidents and punctures/wheel changes.

For more details please contact Citroën at <http://citroen-uk-en.custhelp.com>

CITROËN MAINTENANCE

From roadside assistance to replacing wear and tear parts or regular servicing, with Citroën Maintenance you have total peace of mind. For a one-off fee or low monthly payment, our experienced engineers will take care of your Citroën, whatever happens.

To find out more, contact your Citroën Dealer or Citroën Authorised Repairer.

CITROËN SERVICING

Available up to 1 year from your vehicle's registration date, but before its first chargeable service, a Citroën Servicing Package enables you to pay in advance for your vehicle's servicing needs for 3 years/35,000 miles.

For further information, please contact your Citroën Dealer.



www.citroen.co.uk | CITROËN UK Ltd. Pinley House, 2 Sunbeam Way, Coventry CV3 1ND.

CITROËN prefers **TOTAL**



This brochure is made from paper from a well-managed forest. Citroën support responsible use of forest resources. Please don't throw me away, give me to a friend or recycle me.

NOTE: Every endeavour has been made to ensure that the information and details contained in this brochure were accurate at the time of going to press January 2017. However the company reserves the right, whilst preserving the essential characteristics of the models described, to introduce at any time modifications, changes of details, equipment or accessories. Every effort will be made to bring this brochure up to date, but in order to avoid any misunderstandings please consult your Dealer. For full details of Citroën Care for Van and Driver, please see the full manufacturer's price list. The Citroën Website contains full information on all Citroën products and offers available in the UK, together with details of our environmental and recycling policies. The site address is www.citroen.co.uk or you can contact Citroën directly via <http://citroen-uk-en.custhelp.com>