



CITROËN C1











SMALL WHERE IT MATTERS, BIG WHERE IT COUNTS. PERFECTLY ADAPTED TO LIFE ON THE CITY STREETS, THE NEW CITROËN C1 IS ULTRA-ECONOMICAL, SAFE AND STYLISH. AND IT'S SO COMPACT THAT IT MAKES LIGHT WORK OF TIGHT SPACES AND TRICKY MANOEUVRES.

DISTINCTIVE, WITH FRESH DESIGN CUES BOTH INSIDE AND OUT, THE NEW CITROËN C1 IS BIG WHERE IT COUNTS – ON ECONOMY AND THE ENVIRONMENT. THIS IS A CAR THAT SIMPLY HAS ITS PRIORITIES RIGHT!

➤ CONTENTS: 6 INTRODUCING 8 UNIQUE STYLING 10 A CONVENIENT FREEDOM  
11 THE ENVIRONMENTAL BENCHMARK & SAFETY WITHOUT COMPROMISE 12 RANGE OVERVIEW  
14 COLOUR, TRIM, WHEEL OPTIONS AND EQUIPMENT SPECIFICATION 15 TECHNICAL SPECIFICATION  
16 ACCESSORIES 17 ENVIRONMENTAL COMMITMENT 18 FINANCE, CARE & INSURANCE 19 GLOSSARY & DIMENSIONS





# STYLISH, SIMPLE, EFFORTLESS.

## FORM AND FUNCTION ARE IN PERFECT HARMONY WHEREVER YOU LOOK ON THE NEW CITROËN C1.

THE CURVES AND FORMS AND TECHNOLOGY THAT MAKE IT UNIQUELY DISTINCTIVE, ALSO MAKE IT EASY, FUN AND SAFE TO TRAVEL IN. FROM THOSE SHORT OVERHANGS AND ROBUST BUMPERS TO THE CLEVERLY PLACED CLEAR CONTROLS, THE DETAILS MAKE A WORLD OF DIFFERENCE.

Vital driving controls are grouped closely around the steering wheel for fingertip control, so the driver can concentrate on the main event – driving. An amazingly tight turning circle and standard variable power assisted steering also makes the new Citroën C1 perfectly adapted to nipping about in the city, whilst the clear and bold speedometer really adds to the sense of fun.



### › LIGHT FANTASTIC

Elevated rounded headlamps make the Citroën C1's characterful face instantly recognisable, while the daytime-running LEDs, standard on VTR and VTR+ or optional on VT models, give a dazzlingly cool stare. Front fog lights, standard on VTR+ and optional on VTR models, complete the refreshing, dynamic look.



### › CONNECT NOW

Let the new Citroën C1 talk to your phone or MP3 through this simple dashboard Bluetooth® system and USB socket, standard on VTR+ or optional on VT and VTR, leaving you to concentrate on the road.

### › GO WITH THE FLOW

Even the cabin's air vents harmonise with new Citroën C1's curvy themes – nothing interrupts the flow!

### › OUTSIDE IN

A stylish flourish – the upper door panels are painted to match the chosen exterior colour.



# FREEDOM IN COMFORT. COMPACT, AGILE AND DESIGNED TO RAISE A SMILE EVERY TIME YOU JUMP IN, THE NEW CITROËN C1 INSPIRES A SENSE OF FREEDOM, EVEN ON THE BUSIEST CITY STREETS.

WHAT'S THE SECRET? A MIXTURE OF VIBRANT STYLING, PRACTICAL THINKING AND PURE VERSATILITY IN ONE UNIQUE PACKAGE.



## › HIGH VOLUME

The boot of the new Citroën C1 transforms from a useful 139 litres under the parcel shelf, right up to 751 litres with the rear seats folded down. This is still a capacious 712 litres on 3-door models. The large rear window is also a wide opening tailgate for optimum access.

## › IT'S ELECTRIC

As you would expect, front electric windows are standard on VTR and VTR+ or optional on VT models for complete convenience.

## › MUSIC NON-STOP

A CD Player is standard, and in addition you can plug your MP3 player into the front panel.



## › IN THE DETAILS

Even the shape of the main air conditioning switch, standard on VTR and VTR+ models, echoes the dashboard design and the whole car's vibrant persona.

## › SUPERSTORE

The new Citroën C1 has plenty of storage compartments spread between the dashboard, centre console and doors – there are two situated immediately above and below the CD player for really easy access.

## › HIDDEN ASSETS

Two cup holders and a 12 volt socket are concealed under the centre console.

# SAFE AND ENVIRONMENTALLY SOUND.

IT'S NO SURPRISE THAT AN INNOVATIVE,  
EFFICIENT CITY CAR HAS GREAT  
ENVIRONMENTAL CREDENTIALS, BUT AT  
99G/KM, CITROËN C1 GOES EVEN FURTHER...

MANUAL MODELS PRODUCE CLASS DEFINING CO<sub>2</sub> EMISSIONS OF JUST 99G/KM AND CAN REACH UP TO 74.3MPG ON THE EXTRA URBAN CYCLE, AND EVEN AROUND TOWN THEY WILL RETURN 55.4MPG. EFFICIENCY IS ENGINEERED IN EVERYWHERE.



## > NO COMPROMISE PROTECTION

Despite its ingenious compactness, there is nothing minimal about Citroën C1's safety features, with a massively strong passenger compartment and carefully engineered crumple zones, its entire structure is designed to protect.



## > LOOKING AFTER EVERYONE

Powerful ABS and Electronic Brakeforce Distribution (EBD), Emergency Braking Assistance (EBA), as well as driver's and front passenger's airbag are all standard across the range. For added safety, Electronic Stability Programme (ESP) is available as an option on all models, whilst VTR and VTR+ have front lateral airbags (optional on VT), ISOFIX child seat anchorage points on the rear split/folding 50/50 seats and remote control central locking. This is a city car that looks after itself and you, whilst minimising its environmental impact.



**PERSONAL CHOICE.** THE NEW CITROËN C1 COMES IN THREE DISTINCT FLAVOURS AND TWO BODY STYLES. WHICHEVER FEELS RIGHT, YOU WILL BE CHOOSING A GREAT CITY CAR WITH PERSONALITY TO SPARE.

## VT. STREETWISE AND STYLISH.

STEP INTO THE NEW CITROËN C1 VT AND THE VIEW IS INSTANTLY DIFFERENT. NARROW BUSY STREETS LOOK WIDER. PARKING SPACES APPEAR AND GAPS IN THE TRAFFIC SEEM TO GROW. YOU CAN MAKE THE MOST OF IT ALL, THANKS TO THE CLEVER VARIABLE POWER ASSISTED STEERING THAT ADAPTS TO EVERY NEW TWIST AND TURN.

### > CITROËN C1 VT SPECIFICATION INCLUDES:

- ABS with Electronic Brakeforce Distribution (EBD)
- Emergency Braking Assistance (EBA)
- Cornering Stability Control (CSC)
- Driver's and front passenger's airbag
- Variable power assisted steering
- 12 volt socket
- Front door pockets
- RDS stereo radio/CD player
- Auxiliary socket for MP3 player
- Dashboard storage compartment
- Height-adjustable steering wheel
- 14" 'Notus' wheel covers (set of four)



PETROL ENGINE AVAILABILITY	CO <sub>2</sub> EMISSIONS (G/KM)		
	VT	VTR	VTR+
1.0i 68 manual 3-door	99	99	99
1.0i 68 manual 5-door	99	99	99
1.0i 68 EGS 5-door			104

## VTR. URBAN SOPHISTICATION.

THE NEW CITROËN C1 VTR ADDS A TOUCH OF CONVENIENCE TO THE GENEROUS GLAZED AREA AND SUPER-COMPACT DIMENSIONS. TAKE THE HEAT OUT OF THE CITY WITH FRONT ELECTRIC WINDOWS AND THE COOLING AIR CONDITIONING.

➤ CITROËN C1 **VTR** SPECIFICATION IN ADDITION TO VT INCLUDES:

- Daytime-running LEDs
- Air conditioning
- Front lateral airbags
- Rev counter
- Front electric windows
- Body colour door mirrors and door handles
- High-frequency remote control central locking
- Rear 50/50 split/folding seats
- Rear Isofix child seat anchorage points
- Rear head restraints
- Black grille with chrome finish surround



## VTR+. THE A-Z OF CITY ESSENTIALS.

CAN YOU HAVE TOO MUCH OF A GOOD THING? WE DON'T THINK SO EITHER. THE NEW CITROËN C1 VTR+ DEVELOPS THE 'ULTIMATE CITY CAR' THEME BY ADDING ALL KINDS OF GOOD THINGS, AND IT'S PROOF THAT YOU CAN MINIMISE YOUR FUEL CONSUMPTION AND YOUR CO<sub>2</sub> WHILE INDULGING YOURSELF AS WELL!

➤ CITROËN C1 **VTR+** SPECIFICATION IN ADDITION TO VTR INCLUDES:

- 14" 'Rift' alloy wheels (set of four)
- **Connecting Box** – Bluetooth® system with USB socket
- Front fog lights
- Dark tinted rear windows
- Leather steering wheel and gear knob
- Shiny black interior details



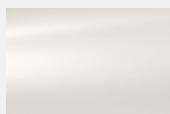
# COLOUR, TRIM & WHEEL OPTIONS

WITH A RANGE OF CAREFULLY CONSIDERED COLOURS TO MATCH THE WELL DESIGNED INTERIOR, IT'S TIME TO MAKE THE NEW CITROËN C1 YOUR OWN.

## BODY COLOURS



Scarlet Red



Lipizzan White



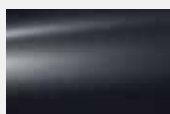
Botticelli Blue



Electra Blue (M)



Gallium Grey (M)

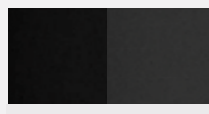


Carlinite Grey (M)

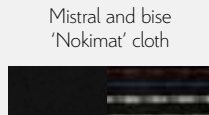


Caldera Black (M)

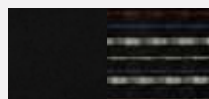
## TRIM



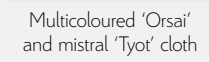
Standard on VT model



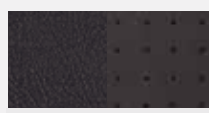
Mistral and bise  
'Nokimat' cloth



Standard on VTR  
and VTR+ models



Multicoloured 'Orsai'  
and mistral 'Tyot' cloth



Optional on VTR+ models

Perforated Alcantara® and  
mistral 'Claudia' leather

## 14" 'NOTUS' WHEEL COVERS

Set of four  
Tyres: 155/65 R14



Standard on VT and VTR models

## 14" 'RIFT' ALLOY WHEELS

Set of four  
Tyres: 155/65 R14



Standard on VTR+,  
optional on VTR models

# EQUIPMENT SPECIFICATION

	VT	VTR	VTR+
<b>SAFETY &amp; SECURITY</b>			
ABS with Electronic Brakeforce Distribution (EBD)	•	•	•
Emergency Braking Assistance (EBA)	•	•	•
Cornering Stability Control (CSC)	•	•	•
Driver's airbag	•	•	•
Front passenger's airbag with cut-off device	•	•	•
Front lateral airbags	o <sup>1</sup>	•	•
High-level third brake light	•	•	•
Front seat belt pretensioners with force-limiters	•	•	•
Transponder immobiliser	•	•	•
High-frequency remote control central locking	o <sup>2</sup>	•	•
Rear Isofix child seat anchorage points	•	•	•
Electronic Stability Programme (ESP)	•	•	o
ESP and curtain airbags	•	•	o
ESP and Connecting Box	•	o	•
<b>LIGHTING &amp; VISIBILITY</b>			
Daytime-running LEDs	o <sup>2</sup>	•	•
Front fog lights	•	o	•
<b>STYLE</b>			
<b>EXTERIOR</b>			
14" 'Notus' wheel covers (set of four)	•	•	•
14" 'Rift' alloy wheels (set of four)	•	o	•
Body colour bumpers	•	•	•
Black door handles, door mirrors and grille	•	•	•
Black grille with chrome finish surround	o <sup>2</sup>	•	•
Body colour door mirrors and door handles	•	•	•
Dark tinted rear windows	•	o	•
Metallic paint	o	o	o
<b>INTERIOR</b>			
Leather steering wheel and gear knob	•	o	•
Shiny black interior details	•	•	•
Luggage cover	•	•	•
<b>SEATING</b>			
Rear 50/50 split/folding seats	•	•	•
Rear head restraints	o <sup>1</sup>	•	•
<b>STORAGE</b>			
Front door pockets	•	•	•
Rear storage pockets	•	•	•
Dashboard storage compartment	•	•	•
<b>COMFORT &amp; CONVENIENCE</b>			
Variable power assisted steering	•	•	•
Height-adjustable steering wheel	•	•	•
Rear window wiper	•	•	•
Heating system	•	•	•
12 volt socket	•	•	•
Air conditioning	•	•	•
Front electric windows	o <sup>2</sup>	•	•
<b>Plus Pack</b> – ESP, Connecting Box, daytime-running LEDs, chrome front grille surround, front electric windows, high-frequency remote control central locking and 4 speakers	o	•	•
<b>DRIVER INFORMATION</b>			
Lockable fuel cap	•	•	•
Full size spare wheel	•	•	•
Speedometer	•	•	•
Rev counter	•	•	•
<b>IN-CAR ENTERTAINMENT</b>			
RDS stereo radio/CD player	•	•	•
Auxiliary socket for MP3 player	•	•	•
2 speakers	•	•	•
4 speakers	o <sup>2</sup>	•	•
<b>Connecting Box</b> – Bluetooth® system with USB socket	o <sup>2</sup>	o	•

• Standard equipment

o Optional factory fitted equipment

(M) Metallic

<sup>1</sup> Rear head restraints are present when optional front lateral airbags are ordered.

<sup>2</sup> Available as part of optional Plus Pack.

Colours and pictures shown are for illustration purposes only. Consult your Dealer for definitive colour and trim/upholstery details.

# TECHNICAL SPECIFICATION

		PETROL MODELS		
		1.0i 68 manual 3-door	1.0i 68 manual 5-door	1.0i 68 EGS 5-door
<b>ENGINE</b>				
	Capacity (cc)	998	998	998
	Cylinders	3 in line	3 in line	3 in line
	Bore and stroke (mm)	71.0 x 84.0	71.0 x 84.0	71.0 x 84.0
	Max power CEE (kW/rpm)	50/6000	50/6000	50/6000
	Max torque CEE (Nm/rpm)	93/3600	93/3600	93/3600
	Fuel system	Multi-point electronic fuel injection		
	Euro status	Euro 5		
<b>TRANSMISSION</b>		Front wheel drive		
	Five speed manual	•	•	•
	Five speed EGS			
(All figures driver alone) <b>PERFORMANCE</b>				
	Max speed (mph)	98	98	98
	0-62mph (secs)	12.3	12.3	14.0
	Standing 1000m (secs)	34.5	34.5	35.6
(Official Government test fuel consumption figures) <b>ECONOMY Litres/100km (mpg)</b>				
	Urban cycle	5.1 (55.4)	5.1 (55.4)	5.4 (52.3)
	Extra urban	3.8 (74.3)	3.8 (74.3)	4.0 (70.6)
	Combined	4.3 (65.7)	4.3 (65.7)	4.5 (62.8)
<b>CO<sub>2</sub> EMISSIONS (g/km)</b>		99	99	104
Please note: the maximum plated weights must not be exceeded <b>WEIGHTS (kg)</b>				
	Mass in service	900	905	925
	Max laden weight	1180	1190	1190
<b>BRAKES</b>		ABS with EBD, EBA and CSC. Front ventilated discs and rear drums.		
<b>STEERING</b>		Variable power assisted steering		
	Number of turns lock to lock	3.3	3.3	3.3
	Turning circle between kerbs (m)	9.5	9.5	9.5
<b>SUSPENSION</b>				
	Front	MacPherson suspension with triangulated lower arms, coil springs, telescopic hydraulic dampers and anti-roll bar		
	Rear	Trailing arm suspension with deformable crossmember, coil springs and telescopic hydraulic dampers		
<b>FUEL TANK CAPACITY Litres (gallons)</b>		35 (7.7)	35 (7.7)	35 (7.7)
<b>EXTERIOR DIMENSIONS (mm)</b>				
	Length/Width/Height	3440/1630/1465	3440/1630/1465	3440/1630/1465
	Wheelbase	2340	2340	2340
<b>BOOT VOLUME (Litres)</b>				
	Up to parcel shelf	139	139	139
	Up to top of rear seats	199	199	199
	Rear seats folded forward up to roof	712	751	751



**65.7mpg**  
on 1.0i 68 manual models



**99g/km CO<sub>2</sub>**  
on 1.0i 68 manual models

# FREEDOM OF CHOICE. NEW CITROËN C1 ACCESSORIES SET YOU FREE TO ENHANCE THE CORE QUALITIES OF AN EXTRAORDINARY CAR.

FROM SUNROOFS TO TOMTOM SATELLITE NAVIGATION SYSTEMS, FROM LUXURY TOUCHES TO PRACTICAL EQUIPMENT, YOU'LL FIND THE SOLUTIONS YOU'RE LOOKING FOR. VISIT [WWW.ACCESSORIES.CITROEN.CO.UK](http://WWW.ACCESSORIES.CITROEN.CO.UK) TO VIEW THE FULL RANGE OF CITROËN C1 ACCESSORIES.



## > TOMTOM CHOICE

Choose from two TomTom Start 20 models. Both Start 20 UK & ROI and Start 20 Europe include plenty of great features such as 4.3" high quality touch screen, IQ routes and advanced lane guidance.



## > 1 MUDFLAPS

Contoured front and rear mudflaps protect bodywork and enhance safety in poor weather.

## > 2 ALLOY WHEELS

Add your personal touch with our alloy wheel range. These alloys have been designed and developed featuring a bold design with clean lines, alloy wheels are one of the few parts that can profoundly affect a vehicle's appearance.

## > 3 REAR SPOILER

This rear spoiler accentuates the vehicle's posture on the road and reinforces the vehicle's personality by giving it even more dynamism and style.

## > 4 SUNROOF

If you love the feel of the outdoors whilst motoring, a tilt and slide manual sunroof is available to get you closer to nature.

## > 5 PARKING SENSORS (FRONT & REAR)

Parking becomes stress-free with Citroën's front and rear parking sensor kit, which is subtly integrated into your new Citroën C1's bumpers.

## > 6 ROOF BARS

Citroën roof bars have been designed to allow for the most secure moving of your luggage, bicycles or roof boxes etc. Our quality testing programme guarantees that not only do they look good but that you can use them with complete confidence too.

# EFFICIENCY MINUS COMPROMISE. CITROËN HAS CREATED FUELEFFICIENT VEHICLES WITHOUT SACRIFICING DRIVER ENJOYMENT FOR SOME TIME. THE LATEST ADVANCES TAKE THIS FINE BALANCE FURTHER STILL...

WITH THE PROVEN CREDENTIALS AND ENVIRONMENTAL PERFORMANCE OF CITROËN HDi DIRECT INJECTION ENGINES AS INSPIRATION, e-HDi ADDS NEW TECHNOLOGY, SUCH AS A SMOOTH, SIMPLE STOP & START SYSTEM AND EGS GEARBOX. THE RESULTS ARE A DRAMATIC REDUCTION IN BOTH FUEL CONSUMPTION AND CO<sub>2</sub> EMISSIONS, COMBINED WITH RESPONSIVE PERFORMANCE WHEREVER YOU GO.



We've been equipping more of our vehicles with more environmentally friendly breakthroughs, such as our Electronic Gearbox System (EGS), which boasts impressively greener credentials, with less pollution and up to 5% more economy than a conventional manual gearbox system. In addition, Citroën has expanded the use of the exceptionally efficient, self-regenerating Diesel Particulate Filter System in our models. Cleaner, greener driving without taking away from the drive – that's what you can continue to expect from Citroën.



## › ELECTRIFYING. HOWEVER YOU LOOK AT IT

Forget what you know about electric cars. Citroën Survolt concept combines undiluted glamour with advanced sporting dynamics, then adds a 100% electric drivetrain. Outside, LED lights, voluptuous curves, two-tone charcoal and fuchsia paintwork, and a race-inspired rear spoiler meet your gaze. Inside, a stunning blend of curved chrome, swooping glass, high technology and organic forms welcomes you to an entirely new place. But this is no simple styling exercise. At heart, Survolt is even more radical, because although it is designed to thrill, it is powered purely by silent, efficient, clean electricity.

## › AIRDREAM – A BENCHMARK

When it comes to the environment we wanted to show our genuine commitment as well as our profound expertise, so we have devised a benchmarking scheme with the signature 'Airdream'. To qualify for the Airdream signature, vehicles must have an e-HDi, electric or Hybrid4 engine.

# DRIVE YOUR WAY. GET BEHIND THE WHEEL OF YOUR NEW CITROËN C1, WITH CITROËN'S RANGE OF FINANCE AND INSURANCE PRODUCTS.

## CITROËN FINANCIAL SERVICES

### PURCHASE PLAN

Own your vehicle with this flexible package designed to fit your budget.

### ELECT 3

A new Citroën car every two or three years with monthly payments structured to suit your budget.

### ELECT 4

Enjoy the convenience of a new car without the stress and hassle of ownership.

TO FIND OUT MORE ABOUT CITROËN PRODUCTS AND SERVICES, GO TO [WWW.CITROEN.CO.UK](http://WWW.CITROEN.CO.UK) OR CONTACT YOUR CITROËN DEALER.

## FOR BUSINESS USERS

## CITROËN CONTRACT MOTORING

### HIRE PURCHASE

A tried and tested finance package that allows you to own your vehicle.

### BUSINESS LEASE

An alternative to vehicle ownership that allows you to control your business cash flow and gain tax efficiencies.

### LEASE PURCHASE

Own a vehicle with a finance solution that offers ultimate flexibility to complement your business cash flow.

### CONTRACT HIRE

A non-ownership finance solution that keeps costs fixed and risks low.

FOR MORE INFORMATION ON CITROËN FLEET AND BUSINESS SALES, PLEASE CALL CITROËN FLEET CONNECT ON 08457 940 940 OR LOOK US UP AT [WWW.CITROEN.CO.UK/FLEET](http://WWW.CITROEN.CO.UK/FLEET)

## CITROËN INSURANCE

### INSTANT COVER

To help you drive away your new car without delay, we offer Instant Cover insurance, providing you with 7 days comprehensive car insurance, for free!

### MOTOR INSURANCE

Citroën Insurance has been designed specifically for our vehicles. You don't just get repairs you get Citroën expertise, service, quality and parts. So, when the time comes to renew your insurance cover, call Citroën Insurance on 0870 024 2725.

Lines open 8am - 8pm weekdays, 9am - 5pm Saturdays. Max call charge from a BT landline is 8p per minute. Calls from other networks may vary. Alternatively, visit [www.citroen.co.uk](http://www.citroen.co.uk) for more information or to apply online.

Citroën Insurance is underwritten by UK Insurance Ltd which is authorised and regulated by the Financial Services Authority. Citroën Insurance is a trading style of Banque PSA Finance UK of Quadrant House, Princess Way, Redhill, Surrey, RH1 1QA.

# ESSENTIAL CARE. CITROËNS ARE RENOWNED FOR THEIR RELIABILITY – AND THE CITROËN C1 IS NO EXCEPTION.

WITH THE ADDED REASSURANCE OF A WARRANTY, ROUTINE SERVICING AND MAINTENANCE, AS WELL AS 24-HOUR ROADSIDE ASSISTANCE, YOU ARE PROTECTED.

## CITROËN WARRANTY

Every new Citroën car has the benefit of a 3 year\* warranty package, plus a 12 year anti-perforation\*\* warranty and a 3 year paint warranty.

\* 2 years' unlimited warranty. No-fee customer option of 1 year's Dealer provided warranty, only on cars sourced from Citroën UK Limited. Note: Dealer provided warranty is limited to 60,000 miles for cars.

\*\* Against all internal to external perforation to bodywork or underbody.

## CITROËN EXTENDED WARRANTY

With a Citroën Extended Warranty, we offer you the opportunity to continue your care-free motoring for a further 1 or 2 years beyond the 3 year warranty and up to 120,000 miles.

To find out more, contact your Citroën Dealer or call the Customer Contact Centre on 0844 463 3500.

Extended Warranty insurance is underwritten by Pinnacle Insurance Plc which is authorised and regulated by the Financial Services Authority.

## CITROËN ASSISTANCE

In response to a free telephone call in the UK, Citroën Assistance brings rapid expert roadside assistance to you in an emergency. It comes free of charge for a full year and operates 24 hours a day in all parts of the UK and Europe. Services include nationwide recovery for both car and passengers, a home call service, replacement vehicle, hotel accommodation and vehicle storage if required. Please note, Citroën Assistance only applies to incidents covered by the new vehicle warranty, and excludes non-vehicle faults, such as running out of fuel, mis-fuelling, loss of keys, lock-ins, road traffic accidents and punctures/wheel changes.

Full details are available on request from Citroën UK via [cuk\\_contactcentre@citroen.com](mailto:cuk_contactcentre@citroen.com)

## CITROËN MAINTENANCE

From roadside assistance to replacing wear and tear parts or regular servicing, with Citroën Maintenance you have total peace of mind. For a one-off fee or low monthly payment, our experienced engineers will take care of your Citroën, whatever happens.

To find out more, contact your Citroën Dealer or Citroën Authorised Repairer.

## CITROËN SERVICING

Available up to 1 year from your vehicle's registration date, but before its first chargeable service, a Citroën Servicing Package enables you to pay in advance for your vehicle's servicing needs for 3 years/35,000 miles.

For further information, please contact your Citroën Dealer.

# GLOSSARY

## › ANTI-LOCK BRAKING SYSTEM (ABS)

Computer-controlled braking assistance designed to prevent the wheels from locking under extreme braking. This enables the car to continue being steered and therefore controlled during this braking incident. The Citroën C1's ABS system is further enhanced with EBA and EBD.

## › ELECTRONIC BRAKEFORCE DISTRIBUTION (EBD)

A conventional ABS system cannot account for any of the four wheels wanting to lock more quickly than the others (for example, two of the wheels may be on snow and two on tarmac). EBD reads the deceleration rate of each wheel individually and applies the ABS principles accordingly.

## › EMERGENCY BRAKING ASSISTANCE (EBA)

As drivers we find it difficult to instinctively brake very hard, but this is often what is needed in those rare emergency situations. The EBA system recognises our 'attempt' to brake hard and in combination with the ABS and EBD systems instantly applies the maximum stopping power possible.

## › CORNERING STABILITY CONTROL (CSC)

When braking on a bend, the weight applied to the wheel on the inside of the turn is less than the weight applied to the wheel on the outside of the turn. If the braking pressure is identical on the wheel on the inside of the turn and on the wheel on the outside of the turn, the vehicle tends to move straight ahead, therefore under-steering. The CSC function distributes the pressure on the right and left wheels in such a way as to slow the vehicle down while guaranteeing its steerability.

## › CONNECTING BOX

Integrated Bluetooth® hands-free phone function with USB socket and jack to plug in a portable MP3 player.

## › VARIABLE POWER ASSISTED STEERING

A system that provides extra power assistance for a vehicle's steering at low speeds (such as turning a sharp corner) and less assistance during high-speed situations.

## › FRONT SEAT BELT PRE-TENSIONERS

In the event of a crash, a pre-tensioner will tighten the seat belt almost instantaneously. This reduces the load on the occupant in a violent crash. Like airbags, pre-tensioners are triggered by sensors in the car's body, and use explosively expanding gas to drive a piston that retracts the belt. Seatbelt pre-tensioners also lower the risk of 'submarining', which is when a passenger slides forward under a loosely worn seat belt.

## › RADIO DATA SYSTEM (RDS)

A traffic information on FM radio, allowing the station name and other information to be transmitted alongside audio information.

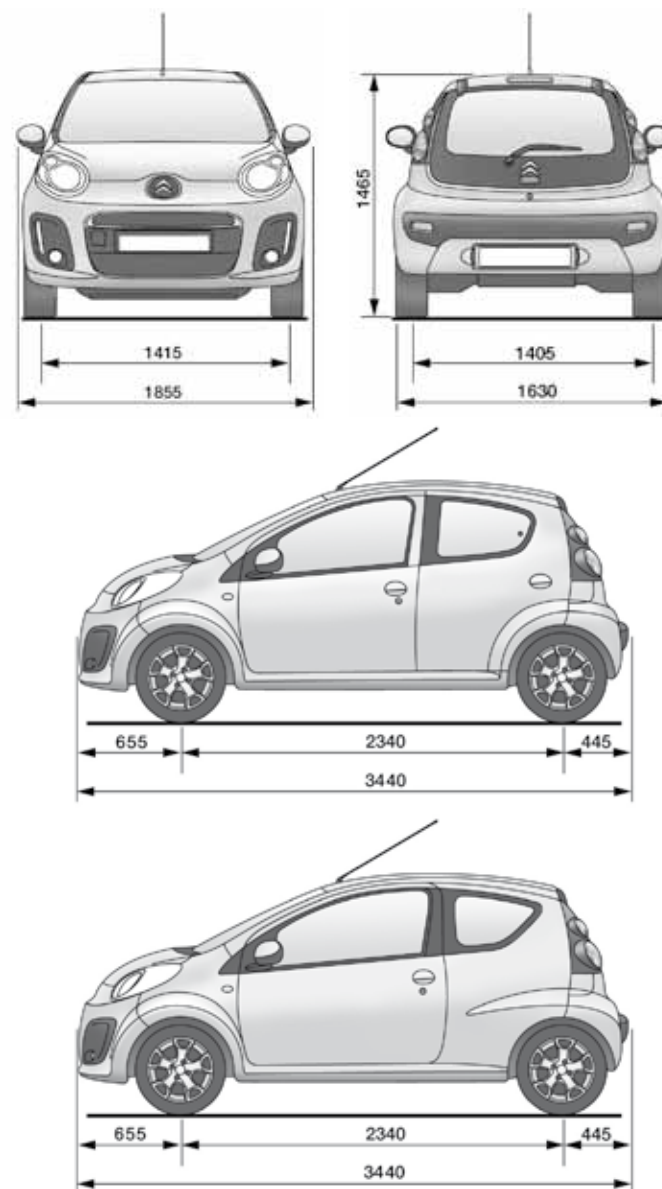
## › ELECTRONIC STABILITY PROGRAMME (ESP)

This is computer-controlled traction assistance and is provided primarily through the braking systems. The ESP's control unit constantly compares where the driver intends going (through the position of the steering wheel) with where the vehicle is actually going and, if necessary, makes speed corrections to each wheel individually through braking or engine torque to keep the vehicle 'in line'.

## › ISOFIX

A standardised and more simple method for installing child seats, each seat is 'clicked' into place via a three point system. On the Citroën C1, Isofix is installed on the outer rear seats.

# DIMENSIONS



All measurements are in millimetres.



This brochure is made from paper from a well-managed forest. Citroën support responsible use of forest resources.

Please don't throw me away, give me to a friend or recycle me.

NOTE: Every endeavour has been made to ensure that the information and details contained in this brochure were accurate at the time of going to press April 2012. However the company reserves the right, whilst preserving the essential characteristics of the models described, to introduce at any time modifications, changes of details, equipment or accessories. Every effort will be made to bring this brochure up to date, but in order to avoid any misunderstandings please consult your Dealer. For full details of Citroën Care for Car and Driver, please see the full manufacturer's price list. The Citroën Website contains full information on all Citroën products and offers available in the UK, together with details of our environmental and recycling policies. The site address is: [www.citroen.co.uk](http://www.citroen.co.uk) or you can contact Citroën directly via [cuk\\_contactcentre@citroen.com](mailto:cuk_contactcentre@citroen.com)

CITROËN prefers TOTAL

CITROËN UK Ltd. 221 Bath Road, Slough SL1 4BA.  
[www.citroen.co.uk](http://www.citroen.co.uk)

CRÉATIVE TECHNOLOGIE

